



LABOUR FORCE

AUSTRALIA
PRELIMINARY

EMBARGO: 11:30AM (CANBERRA TIME) THURS 13 FEB 2003

JANUARY KEY FIGURES

TREND

	Dec 2002	Jan 2003	monthly change
Employed persons ('000)	9 477.3	9 517.4	0.4 %
Unemployed persons ('000)	617.1	620.4	0.5 %
Unemployment rate (%)	6.1	6.1	0.0 pts
Participation rate (%)	64.1	64.3	0.2 pts

SEASONALLY ADJUSTED

	Dec 2002	Jan 2003	monthly change
Employed persons ('000)	9 475.6	9 586.6	111.0
Unemployed persons ('000)	628.4	619.9	-8.5
Unemployment rate (%)	6.2	6.1	-0.1 pts
Participation rate (%)	64.2	64.7	0.6 pts

JANUARY KEY POINTS

TREND ESTIMATES

EMPLOYMENT

- increased to 9,517,400.

UNEMPLOYMENT

- increased to 620,400.

UNEMPLOYMENT RATE

- remained at 6.1%.

PARTICIPATION RATE

- increased to 64.3%.

NOTE!
See page 2 for more information about this month's estimates.

SEASONALLY ADJUSTED ESTIMATES

EMPLOYMENT

- increased by 111,000 to 9,586,600. Full-time employment increased by 72,400 to 6,853,700 and part-time employment increased by 38,600 to 2,732,900.

UNEMPLOYMENT

- decreased by 8,500 to 619,900. The number of persons looking for full-time work increased by 6,500 to 467,800 and the number of persons looking for part-time work decreased by 15,100 to 152,100.

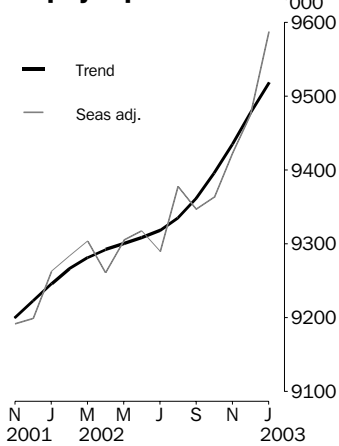
UNEMPLOYMENT RATE

- decreased by 0.1 percentage point to 6.1%. The male rate decreased slightly to 6.2% and the female rate fell by 0.3 percentage points to 5.9%.
- NSW 5.9% (6.1% last month), Vic 5.6% (5.8%), Qld 6.9% (7.1%), SA 6.1% (5.6%), WA 6.0% (6.4%), Tas 8.6% (9.5%).

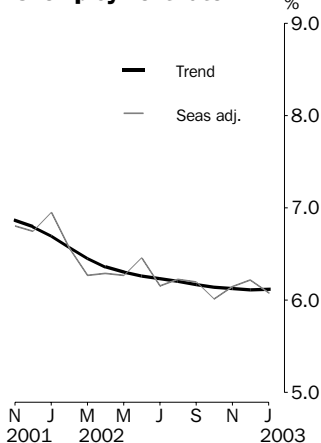
PARTICIPATION RATE

- increased by 0.6 percentage points to 64.7%.

Employed persons



Unemployment rate



- For further information about these and related statistics, contact Peter Bradbury on 02 6252 6525, or the National Information and Referral Service on 1300 135 070.

FORTHCOMING ISSUES

<i>ISSUE</i>	<i>RELEASE DATE</i>
February 2003	13 March 2003
March 2003	10 April 2003
April 2003	08 May 2003
May 2003	12 June 2003
June 2003	10 July 2003
July 2003	07 August 2003



NOTES ON ESTIMATES

Employment estimates for January 2003 may have been influenced by the following factors, and hence should be used with caution.

The ABS is in the process of introducing a new sample for the Labour Force Survey based on the 2001 Census of Population and Housing. The new sample will be introduced progressively over the period November 2002 to June 2003 (see paragraphs 13 to 15 of the Explanatory Notes or *Information Paper: Labour Force Survey Sample Design* (cat. no. 6269.0)). While some additional volatility can be expected during implementation, the part of the new sample introduced in January shows considerably higher employment levels, particularly for males employed full-time and females employed part-time, than the part of the sample it replaced.

The recent increase in volatility of seasonally adjusted estimates of employed females appears to have been influenced by changes in seasonal patterns. The ABS is investigating enhancements to the seasonal adjustment methodology to improve its ability to adapt to changing patterns of seasonality. Further details are in the article on volatility of labour force estimates published in the December 2002 issue of *Labour Force, Australia* (cat. no. 6203.0).

Analysis has shown that the variation in interview start date for the Labour Force Survey can have an effect on labour force estimates, reflecting the impact of the new year holiday period on people's movements and labour market involvement. As a result of the predetermined pattern of interviewing start dates (see paragraph 5 of the Explanatory Notes), interviewing for January 2003 commenced on 13 January. The seasonal adjustment process currently makes no specific adjustment for variation in this start date, although the possibility of adjusting for this effect is being investigated (for further details, see the article referred to in the previous paragraph).



SEASONAL REANALYSIS

Results from the next scheduled annual reanalysis of seasonally adjusted labour force data will be released on 6 March 2003. Revised seasonally adjusted and trend series will be included in the February 2003 issue of this publication.



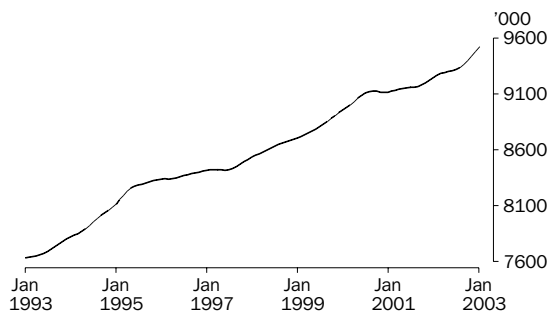
Dennis Trewin
Australian Statistician



PRINCIPAL LABOUR FORCE SERIES: Trend estimates

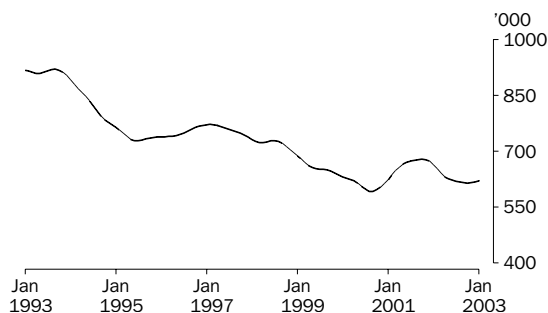
EMPLOYED PERSONS

The trend estimate of employed persons generally rose from a low of 7,634,000 in January 1993 to 9,126,300 in September 2000. The trend then fell to 9,113,100 in December 2000 before rising to stand at 9,517,400 in January 2003.



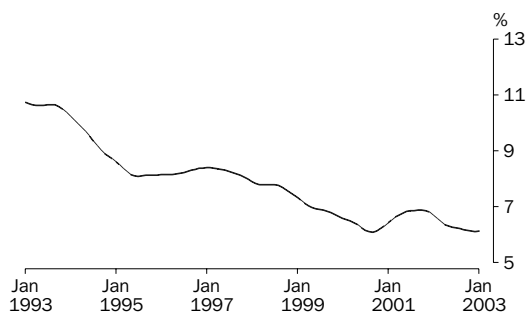
UNEMPLOYED PERSONS

The trend estimate of unemployed persons peaked at 920,600 in September 1993, before falling rapidly to 728,100 in July 1995. The trend then rose slowly, reaching 771,600 in February 1997, before falling to 591,800 in September 2000. The trend then rose to 678,000 in October 2001, before falling to stand at 620,400 in January 2003.



UNEMPLOYMENT RATE

From a high of 10.7% in January 1993, the trend unemployment rate remained steady until late 1993, before falling rapidly to 8.1% in July 1995. The trend then rose slowly until February 1997, before falling to 6.1% in September 2000. The trend rate then rose to 6.9% in October 2001, before falling to 6.1% in January 2003.

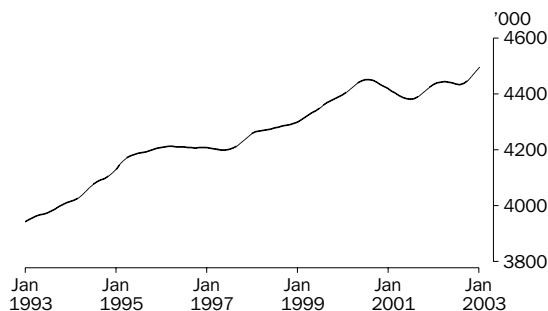


EMPLOYED PERSONS: Trend estimates

MALES EMPLOYED FULL TIME

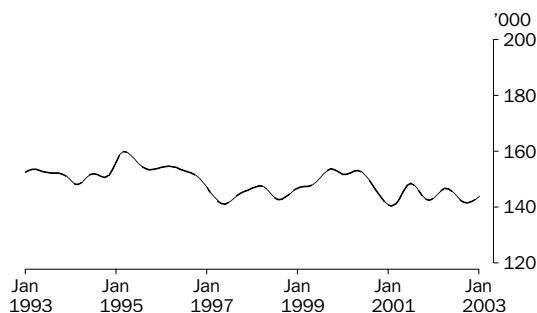
TOTAL

Apart from a flat period between 1995 and 1997, the trend estimate of males employed full time rose strongly, from 3,942,100 in January 1993 to a peak of 4,451,000 in August 2000. Since then the trend fell to 4,380,300 in July 2001, before generally rising to stand at 4,495,300 in January 2003.



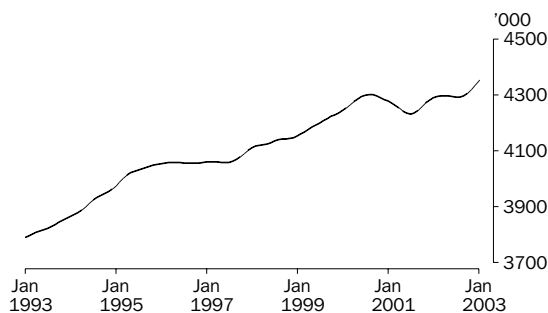
MALES AGED 15-19

Although fluctuating, the trend estimate of males aged 15 to 19 employed full time generally decreased through the decade from 152,500 in January 1993 to 143,700 in January 2003.



MALES AGED 20 AND OVER

Apart from a flat period between May 1995 and June 1997, the trend estimate of males aged 20 and over employed full time rose steadily, from 3,789,600 in January 1993 to a high of 4,301,400 in August 2000. The trend then fell until July 2001, before generally rising to stand at 4,351,600 in January 2003.

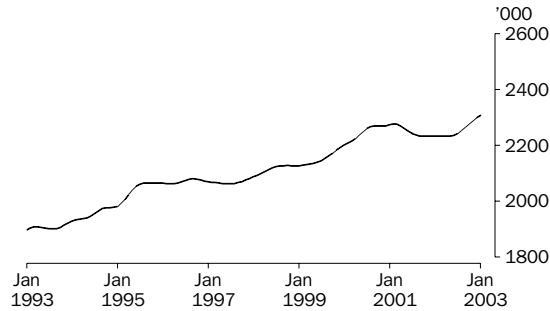


EMPLOYED PERSONS: Trend estimates

FEMALES EMPLOYED FULL TIME

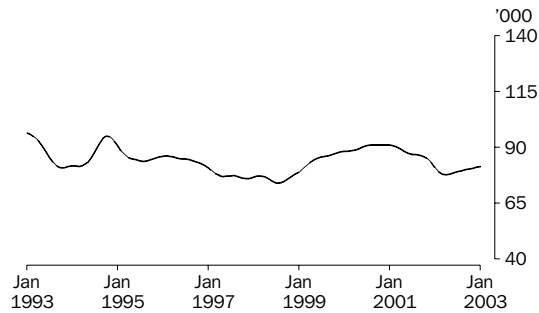
TOTAL

The trend estimate for females employed full time generally rose from 1,896,000 in January 1993 to 2,276,800 in February 2001. The trend then decreased to 2,231,900 in November 2001, before rising to stand at 2,307,900 in January 2003.



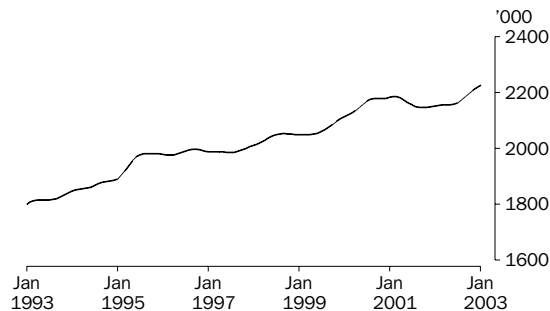
FEMALES AGED 15-19

The trend estimate of females aged 15 to 19 employed full time fell rapidly to 80,800 in October 1993. Although fluctuating, the trend generally decreased over the next five years to reach 74,000 in August 1998. It then rose to 91,100 in September 2000, before falling to 77,600 in April 2002, and has since risen to stand at 81,500 in January 2003.



FEMALES AGED 20 AND OVER

The trend estimate of females aged 20 and over employed full time generally increased from a low of 1,799,600 in January 1993 to 2,186,000 in February 2001. The trend then decreased to 2,146,600 in October 2001, before rising to 2,226,400 in January 2003.



LABOUR FORCE STATUS (AGED 15 AND OVER): Original

Month	EMPLOYED.....			UNEMPLOYED.....			Labour force	Not in labour force	Civilian population aged 15 and over	Unemployment rate	Participation rate
	Full time	Part time	Total	Looking for f/t work	Looking for p/t work	Total					
	'000	'000	'000	'000	'000	'000					
MALES											
2001											
November	4 403.3	720.6	5 123.9	317.3	54.1	371.4	5 495.3	2 148.1	7 643.3	6.8	71.9
December	4 501.3	715.0	5 216.3	313.2	63.3	376.5	5 592.8	2 060.2	7 653.0	6.7	73.1
2002											
January	4 428.8	695.9	5 124.7	353.4	69.3	422.8	5 547.5	2 113.8	7 661.3	7.6	72.4
February	4 444.8	723.3	5 168.1	350.0	66.8	416.8	5 584.8	2 084.7	7 669.5	7.5	72.8
March	4 416.7	758.7	5 175.3	310.3	71.2	381.5	5 556.9	2 120.9	7 677.8	6.9	72.4
April	4 412.8	769.0	5 181.8	300.5	70.0	370.5	5 552.4	2 135.7	7 688.0	6.7	72.2
May	4 446.0	746.8	5 192.7	298.5	65.7	364.1	5 556.9	2 141.4	7 698.3	6.6	72.2
June	4 415.9	805.2	5 221.1	297.5	55.0	352.4	5 573.5	2 135.0	7 708.6	6.3	72.3
July	4 447.8	777.3	5 225.1	273.4	47.5	320.9	5 546.0	2 172.6	7 718.6	5.8	71.9
August	4 395.0	785.9	5 180.9	276.4	64.8	341.3	5 522.2	2 206.5	7 728.7	6.2	71.5
September	4 475.8	768.6	5 244.4	287.3	68.2	355.5	5 599.9	2 138.8	7 738.7	6.3	72.4
October	4 430.8	794.6	5 225.4	265.2	56.3	321.4	5 546.9	2 201.4	7 748.3	5.8	71.6
November	4 450.4	775.3	5 225.7	270.0	56.1	326.1	5 551.8	2 206.0	7 757.8	5.9	71.6
December	4 556.1	767.7	5 323.8	285.8	67.9	353.7	5 677.5	2 089.9	7 767.4	6.2	73.1
2003											
January	4 511.4	736.0	5 247.3	316.7	63.9	380.6	5 627.9	2 151.2	7 779.1	6.8	72.3
FEMALES											
2001											
November	2 229.4	1 837.1	4 066.5	170.1	87.9	258.1	4 324.6	3 529.8	7 854.3	6.0	55.1
December	2 263.2	1 834.8	4 098.1	185.5	99.5	285.0	4 383.0	3 480.4	7 863.5	6.5	55.7
2002											
January	2 249.0	1 750.1	3 999.1	208.5	96.0	304.5	4 303.7	3 567.7	7 871.4	7.1	54.7
February	2 236.6	1 826.2	4 062.9	204.5	104.9	309.5	4 372.3	3 507.0	7 879.3	7.1	55.5
March	2 239.1	1 853.1	4 092.2	178.3	102.1	280.4	4 372.6	3 514.6	7 887.2	6.4	55.4
April	2 196.6	1 880.7	4 077.2	171.5	88.1	259.6	4 336.8	3 560.7	7 897.5	6.0	54.9
May	2 217.5	1 873.7	4 091.2	166.2	96.0	262.1	4 353.3	3 554.5	7 907.8	6.0	55.1
June	2 196.8	1 921.6	4 118.4	181.5	90.5	272.0	4 390.4	3 527.8	7 918.2	6.2	55.4
July	2 250.8	1 872.1	4 122.9	150.8	86.1	236.9	4 359.8	3 568.9	7 928.7	5.4	55.0
August	2 248.3	1 880.8	4 129.1	164.7	90.1	254.8	4 383.9	3 555.2	7 939.1	5.8	55.2
September	2 304.5	1 898.5	4 203.0	167.4	105.5	273.0	4 475.9	3 473.7	7 949.7	6.1	56.3
October	2 260.9	1 904.2	4 165.2	150.9	97.5	248.4	4 413.6	3 545.8	7 959.4	5.6	55.5
November	2 276.2	1 918.8	4 195.0	166.8	83.7	250.5	4 445.5	3 523.7	7 969.2	5.6	55.8
December	2 354.8	1 912.9	4 267.7	175.0	95.5	270.5	4 538.2	3 440.8	7 979.0	6.0	56.9
2003											
January	2 332.3	1 860.0	4 192.3	191.3	80.9	272.2	4 464.5	3 526.6	7 991.1	6.1	55.9
PERSONS											
2001											
November	6 632.7	2 557.7	9 190.4	487.5	142.0	629.5	9 819.8	5 677.8	15 497.7	6.4	63.4
December	6 764.5	2 549.9	9 314.4	498.7	162.8	661.5	9 975.8	5 540.6	15 516.5	6.6	64.3
2002											
January	6 677.8	2 446.0	9 123.8	561.9	165.3	727.3	9 851.1	5 681.6	15 532.7	7.4	63.4
February	6 681.4	2 549.5	9 230.9	554.5	171.7	726.2	9 957.2	5 591.7	15 548.8	7.3	64.0
March	6 655.8	2 611.8	9 267.6	488.7	173.3	661.9	9 929.5	5 635.5	15 565.0	6.7	63.8
April	6 609.4	2 649.7	9 259.1	472.0	158.1	630.1	9 889.2	5 696.4	15 585.6	6.4	63.5
May	6 663.5	2 620.4	9 283.9	464.6	161.7	626.3	9 910.2	5 695.9	15 606.1	6.3	63.5
June	6 612.8	2 726.7	9 339.5	478.9	145.5	624.4	9 964.0	5 662.8	15 626.7	6.3	63.8
July	6 698.6	2 649.4	9 348.0	424.2	133.6	557.8	9 905.8	5 741.5	15 647.3	5.6	63.3
August	6 643.4	2 666.7	9 310.1	441.1	154.9	596.1	9 906.1	5 761.7	15 667.8	6.0	63.2
September	6 780.3	2 667.1	9 447.4	454.7	173.7	628.5	10 075.9	5 612.5	15 688.4	6.2	64.2
October	6 691.7	2 698.9	9 390.6	416.1	153.8	569.9	9 960.5	5 747.2	15 707.7	5.7	63.4
November	6 726.6	2 694.1	9 420.7	436.8	139.8	576.6	9 997.3	5 729.7	15 727.0	5.8	63.6
December	6 910.9	2 680.7	9 591.5	460.7	163.4	624.1	10 215.7	5 530.7	15 746.4	6.1	64.9
2003											
January	6 843.7	2 596.0	9 439.7	507.9	144.8	652.7	10 092.4	5 677.7	15 770.1	6.5	64.0

LABOUR FORCE STATUS (AGED 15 AND OVER): **Seasonally adjusted**

Month	EMPLOYED.....			UNEMPLOYED.....			Labour force	Unemployment rate	Participation rate
	Full time	Part time	Total	Looking for f/t work	Looking for p/t work	Total			
	'000	'000	'000	'000	'000	'000	'000	%	%
MALES									
2001									
November	4 406.5	733.8	5 140.2	326.1	60.7	386.8	5 527.0	7.0	72.3
December	4 424.3	725.8	5 150.1	316.2	59.6	375.7	5 525.8	6.8	72.2
2002									
January	4 447.6	715.8	5 163.4	323.2	68.5	391.8	5 555.2	7.1	72.5
February	4 431.7	752.3	5 184.0	320.9	61.6	382.4	5 566.4	6.9	72.6
March	4 440.6	755.0	5 195.6	306.3	62.5	368.8	5 564.4	6.6	72.5
April	4 429.6	751.7	5 181.4	304.8	66.3	371.0	5 552.4	6.7	72.2
May	4 473.7	733.0	5 206.7	301.9	64.2	366.1	5 572.8	6.6	72.4
June	4 436.0	777.2	5 213.2	304.2	59.6	363.8	5 577.0	6.5	72.3
July	4 418.8	780.2	5 199.0	289.7	54.2	343.9	5 542.9	6.2	71.8
August	4 439.3	781.7	5 220.9	281.9	72.4	354.3	5 575.2	6.4	72.1
September	4 448.0	762.2	5 210.2	284.0	62.2	346.3	5 556.4	6.2	71.8
October	4 423.6	788.7	5 212.4	278.6	59.9	338.5	5 550.8	6.1	71.6
November	4 453.6	790.0	5 243.6	277.6	63.0	340.6	5 584.2	6.1	72.0
December	4 478.1	779.9	5 258.1	288.5	64.2	352.6	5 610.7	6.3	72.2
2003									
January	4 531.2	756.6	5 287.8	288.7	63.3	352.0	5 639.8	6.2	72.5
FEMALES									
2001									
November	2 231.3	1 820.2	4 051.5	184.0	100.1	284.1	4 335.6	6.6	55.2
December	2 212.9	1 836.1	4 048.9	182.3	107.3	289.5	4 338.5	6.7	55.2
2002									
January	2 239.4	1 859.9	4 099.3	195.3	105.4	300.7	4 400.1	6.8	55.9
February	2 232.4	1 866.7	4 099.1	180.7	89.4	270.1	4 369.2	6.2	55.5
March	2 260.0	1 848.6	4 108.7	167.8	85.7	253.5	4 362.2	5.8	55.3
April	2 215.8	1 863.6	4 079.4	168.6	82.0	250.6	4 330.0	5.8	54.8
May	2 247.0	1 851.5	4 098.5	162.6	93.8	256.4	4 354.8	5.9	55.1
June	2 216.8	1 887.7	4 104.6	188.1	92.0	280.1	4 384.7	6.4	55.4
July	2 216.3	1 874.3	4 090.5	167.6	97.9	265.4	4 356.0	6.1	54.9
August	2 283.5	1 873.6	4 157.1	175.9	92.6	268.4	4 425.5	6.1	55.7
September	2 286.4	1 850.7	4 137.1	169.1	101.7	270.9	4 408.0	6.1	55.4
October	2 250.9	1 899.9	4 150.8	157.4	102.8	260.2	4 410.9	5.9	55.4
November	2 278.2	1 901.8	4 180.0	180.6	95.5	276.2	4 456.1	6.2	55.9
December	2 303.2	1 914.4	4 217.6	172.9	103.0	275.8	4 493.4	6.1	56.3
2003									
January	2 322.5	1 976.3	4 298.8	179.1	88.8	267.9	4 566.7	5.9	57.1
PERSONS									
2001									
November	6 637.8	2 554.0	9 191.8	510.1	160.8	670.9	9 862.7	6.8	63.6
December	6 637.2	2 561.8	9 199.0	498.4	166.9	665.3	9 864.3	6.7	63.6
2002									
January	6 687.0	2 575.7	9 262.7	518.6	174.0	692.5	9 955.2	7.0	64.1
February	6 664.1	2 619.0	9 283.1	501.6	150.9	652.5	9 935.7	6.6	63.9
March	6 700.6	2 603.7	9 304.3	474.1	148.2	622.3	9 926.6	6.3	63.8
April	6 645.5	2 615.3	9 260.8	473.4	148.2	621.6	9 882.4	6.3	63.4
May	6 720.7	2 584.4	9 305.2	464.5	158.0	622.5	9 927.7	6.3	63.6
June	6 652.9	2 664.9	9 317.8	492.3	151.6	643.9	9 961.7	6.5	63.7
July	6 635.0	2 654.4	9 289.5	457.3	152.0	609.4	9 898.8	6.2	63.3
August	6 722.7	2 655.3	9 378.0	457.7	165.0	622.7	10 000.7	6.2	63.8
September	6 734.4	2 612.9	9 347.3	453.2	163.9	617.1	9 964.4	6.2	63.5
October	6 674.5	2 688.6	9 363.1	436.0	162.7	598.6	9 961.7	6.0	63.4
November	6 731.8	2 691.8	9 423.6	458.2	158.6	616.8	10 040.3	6.1	63.8
December	6 781.3	2 694.3	9 475.6	461.3	167.1	628.4	10 104.1	6.2	64.2
2003									
January	6 853.7	2 732.9	9 586.6	467.8	152.1	619.9	10 206.5	6.1	64.7

LABOUR FORCE STATUS (AGED 15 AND OVER): Trend(a)

Month	EMPLOYED.....			UNEMPLOYED.....			Labour force '000	Unemp- loyment rate %	Partic- ipation rate %
	Full time '000	Part time '000	Total '000	Looking for f/t work '000	Looking for p/t work '000	Total '000			
MALES									
2001									
November	4 413.6	729.8	5 143.3	327.0	62.0	389.0	5 532.3	7.0	72.4
December	4 423.9	730.3	5 154.2	323.9	62.5	386.4	5 540.6	7.0	72.4
2002									
January	4 432.3	733.3	5 165.6	319.9	63.4	383.3	5 549.0	6.9	72.4
February	4 438.7	738.3	5 177.0	315.6	63.8	379.4	5 556.4	6.8	72.4
March	4 442.6	744.6	5 187.2	311.3	63.6	374.9	5 562.1	6.7	72.4
April	4 444.0	751.6	5 195.6	306.9	63.1	370.0	5 565.5	6.6	72.4
May	4 442.7	758.7	5 201.3	302.0	62.6	364.7	5 566.0	6.6	72.3
June	4 439.6	765.1	5 204.8	296.5	62.2	358.7	5 563.5	6.4	72.2
July	4 435.6	771.4	5 207.0	290.9	62.1	353.0	5 560.0	6.3	72.0
August	4 433.9	776.9	5 210.8	286.4	62.4	348.7	5 559.5	6.3	71.9
September	4 437.6	780.3	5 217.9	283.3	62.6	345.9	5 563.8	6.2	71.9
October	4 447.6	780.7	5 228.2	281.9	63.0	344.9	5 573.1	6.2	71.9
November	4 462.1	779.1	5 241.2	282.0	63.2	345.2	5 586.4	6.2	72.0
December	4 478.8	776.2	5 255.0	283.0	63.3	346.3	5 601.3	6.2	72.1
2003									
January	4 495.3	773.3	5 268.6	284.9	63.4	348.4	5 617.0	6.2	72.3
FEMALES									
2001									
November	2 231.9	1 825.0	4 056.8	187.3	101.3	288.6	4 345.4	6.6	55.3
December	2 232.2	1 836.0	4 068.2	185.8	100.6	286.4	4 354.6	6.6	55.4
2002									
January	2 233.2	1 847.0	4 080.2	182.8	97.8	280.6	4 360.8	6.4	55.4
February	2 233.7	1 855.6	4 089.2	178.9	94.0	272.9	4 362.1	6.3	55.4
March	2 233.4	1 861.1	4 094.6	175.1	90.5	265.7	4 360.3	6.1	55.3
April	2 232.9	1 863.9	4 096.9	172.8	88.6	261.4	4 358.3	6.0	55.2
May	2 233.2	1 865.9	4 099.2	171.7	89.1	260.9	4 360.0	6.0	55.1
June	2 236.3	1 867.3	4 103.6	171.4	91.5	262.9	4 366.5	6.0	55.1
July	2 242.5	1 868.6	4 111.1	171.4	94.9	266.2	4 377.3	6.1	55.2
August	2 252.5	1 872.0	4 124.5	171.3	97.6	268.8	4 393.4	6.1	55.3
September	2 264.5	1 879.3	4 143.8	170.8	98.8	269.6	4 413.4	6.1	55.5
October	2 276.4	1 891.1	4 167.5	170.8	99.0	269.8	4 437.3	6.1	55.7
November	2 287.7	1 906.7	4 194.3	171.7	98.5	270.3	4 464.6	6.1	56.0
December	2 298.8	1 923.5	4 222.2	173.1	97.6	270.8	4 493.0	6.0	56.3
2003									
January	2 307.9	1 940.9	4 248.8	175.8	96.2	272.0	4 520.9	6.0	56.6
PERSONS									
2001									
November	6 645.4	2 554.7	9 200.2	514.2	163.3	677.6	9 877.7	6.9	63.7
December	6 656.1	2 566.3	9 222.4	509.7	163.1	672.8	9 895.2	6.8	63.8
2002									
January	6 665.5	2 580.4	9 245.9	502.7	161.2	663.9	9 909.8	6.7	63.8
February	6 672.3	2 593.9	9 266.2	494.5	157.8	652.3	9 918.5	6.6	63.8
March	6 676.1	2 605.8	9 281.8	486.4	154.1	640.6	9 922.4	6.5	63.7
April	6 676.9	2 615.5	9 292.4	479.7	151.8	631.4	9 923.9	6.4	63.7
May	6 675.9	2 624.6	9 300.5	473.8	151.8	625.6	9 926.0	6.3	63.6
June	6 675.9	2 632.4	9 308.4	467.9	153.7	621.6	9 930.0	6.3	63.5
July	6 678.1	2 640.0	9 318.1	462.3	157.0	619.3	9 937.3	6.2	63.5
August	6 686.4	2 648.9	9 335.3	457.6	159.9	617.5	9 952.9	6.2	63.5
September	6 702.1	2 659.6	9 361.7	454.0	161.5	615.5	9 977.2	6.2	63.6
October	6 724.0	2 671.8	9 395.7	452.7	162.0	614.7	10 010.4	6.1	63.7
November	6 749.8	2 685.8	9 435.6	453.8	161.7	615.5	10 051.1	6.1	63.9
December	6 777.6	2 699.7	9 477.3	456.1	161.0	617.1	10 094.3	6.1	64.1
2003									
January	6 803.2	2 714.2	9 517.4	460.8	159.6	620.4	10 137.8	6.1	64.3

(a) Trend estimates for July 2002 to December 2002 have been revised.

UNEMPLOYED PERSONS: Original

Month	NUMBER OF UNEMPLOYED PERSONS.....					UNEMPLOYMENT RATE.....					UNEMPLOYMENT TO POPULATION RATIO	
	Aged 15-19 looking for f/t work	Aged 20 and over looking for f/t work	Total looking for f/t work	Looking for p/t work	Total	Aged 15-19 looking for f/t work	Aged 20 and over looking for f/t work	Total looking for f/t work	Looking for p/t work	Total	Aged 15-19 looking for f/t work	Aged 20 and over looking for f/t work
	'000	'000	'000	'000	'000	%	%	%	%	%	%	%
MALES												
2001												
November	42.3	275.0	317.3	54.1	371.4	24.6	6.0	6.7	7.0	6.8	6.1	4.0
December	49.5	263.7	313.2	63.3	376.5	23.4	5.7	6.5	8.1	6.7	7.1	3.8
2002												
January	49.5	303.9	353.4	69.3	422.8	24.5	6.6	7.4	9.1	7.6	7.1	4.4
February	50.7	299.3	350.0	66.8	416.8	25.5	6.5	7.3	8.5	7.5	7.3	4.3
March	37.2	273.1	310.3	71.2	381.5	20.2	6.0	6.6	8.6	6.9	5.3	3.9
April	37.9	262.6	300.5	70.0	370.5	20.9	5.8	6.4	8.3	6.7	5.4	3.8
May	34.5	263.9	298.5	65.7	364.1	19.7	5.8	6.3	8.1	6.6	4.9	3.8
June	33.1	264.4	297.5	55.0	352.4	18.9	5.8	6.3	6.4	6.3	4.7	3.8
July	31.1	242.3	273.4	47.5	320.9	17.1	5.3	5.8	5.8	5.8	4.5	3.5
August	30.7	245.7	276.4	64.8	341.3	18.7	5.5	5.9	7.6	6.2	4.4	3.5
September	29.8	257.5	287.3	68.2	355.5	17.8	5.6	6.0	8.2	6.3	4.3	3.7
October	33.7	231.5	265.2	56.3	321.4	19.7	5.1	5.6	6.6	5.8	4.8	3.3
November	34.6	235.4	270.0	56.1	326.1	20.9	5.2	5.7	6.7	5.9	4.9	3.3
December	44.7	241.0	285.8	67.9	353.7	21.7	5.2	5.9	8.1	6.2	6.4	3.4
2003												
January	50.5	266.1	316.7	63.9	380.6	24.5	5.8	6.6	8.0	6.8	7.2	3.8
FEMALES												
2001												
November	28.6	141.5	170.1	87.9	258.1	25.5	6.2	7.1	4.6	6.0	4.3	2.0
December	34.6	150.9	185.5	99.5	285.0	27.3	6.5	7.6	5.1	6.5	5.2	2.1
2002												
January	37.7	170.8	208.5	96.0	304.5	28.4	7.3	8.5	5.2	7.1	5.7	2.4
February	31.3	173.2	204.5	104.9	309.5	26.9	7.4	8.4	5.4	7.1	4.7	2.4
March	30.7	147.6	178.3	102.1	280.4	29.5	6.4	7.4	5.2	6.4	4.6	2.0
April	25.7	145.7	171.5	88.1	259.6	26.0	6.4	7.2	4.5	6.0	3.9	2.0
May	28.7	137.4	166.2	96.0	262.1	27.6	6.0	7.0	4.9	6.0	4.3	1.9
June	30.5	150.9	181.5	90.5	272.0	29.3	6.6	7.6	4.5	6.2	4.6	2.1
July	22.0	128.8	150.8	86.1	236.9	21.0	5.6	6.3	4.4	5.4	3.3	1.8
August	24.1	140.6	164.7	90.1	254.8	24.8	6.1	6.8	4.6	5.8	3.6	1.9
September	24.4	143.1	167.4	105.5	273.0	24.7	6.0	6.8	5.3	6.1	3.6	2.0
October	23.9	127.0	150.9	97.5	248.4	23.8	5.5	6.3	4.9	5.6	3.6	1.7
November	25.7	141.1	166.8	83.7	250.5	24.6	6.0	6.8	4.2	5.6	3.8	1.9
December	28.1	146.9	175.0	95.5	270.5	23.3	6.1	6.9	4.8	6.0	4.2	2.0
2003												
January	35.9	155.3	191.3	80.9	272.2	27.5	6.5	7.6	4.2	6.1	5.4	2.1
PERSONS												
2001												
November	70.9	416.5	487.5	142.0	629.5	24.9	6.1	6.8	5.3	6.4	5.2	2.9
December	84.1	414.6	498.7	162.8	661.5	24.9	6.0	6.9	6.0	6.6	6.2	2.9
2002												
January	87.2	474.7	561.9	165.3	727.3	26.1	6.9	7.8	6.3	7.4	6.4	3.4
February	82.0	472.5	554.5	171.7	726.2	26.0	6.8	7.7	6.3	7.3	6.0	3.3
March	67.9	420.8	488.7	173.3	661.9	23.6	6.1	6.8	6.2	6.7	5.0	3.0
April	63.6	408.3	472.0	158.1	630.1	22.7	6.0	6.7	5.6	6.4	4.7	2.9
May	63.3	401.4	464.6	161.7	626.3	22.6	5.9	6.5	5.8	6.3	4.6	2.8
June	63.6	415.3	478.9	145.5	624.4	22.8	6.1	6.8	5.1	6.3	4.7	2.9
July	53.1	371.1	424.2	133.6	557.8	18.6	5.4	6.0	4.8	5.6	3.9	2.6
August	54.8	386.4	441.1	154.9	596.1	20.9	5.7	6.2	5.5	6.0	4.0	2.7
September	54.2	400.6	454.7	173.7	628.5	20.3	5.7	6.3	6.1	6.2	4.0	2.8
October	57.6	358.5	416.1	153.8	569.9	21.2	5.2	5.9	5.4	5.7	4.2	2.5
November	60.3	376.5	436.8	139.8	576.6	22.3	5.5	6.1	4.9	5.8	4.4	2.6
December	72.8	387.9	460.7	163.4	624.1	22.3	5.5	6.2	5.7	6.1	5.3	2.7
2003												
January	86.5	421.4	507.9	144.8	652.7	25.6	6.0	6.9	5.3	6.5	6.3	2.9

UNEMPLOYED PERSONS: Seasonally adjusted

Month	NUMBER OF UNEMPLOYED PERSONS....					UNEMPLOYMENT RATE.....					UNEMPLOYMENT TO POPULATION RATIO	
	Aged 15-19 looking for f/t work '000	Aged 20 and over looking for f/t work '000	Total looking for f/t work '000	Looking for p/t work '000	Total '000	Aged 15-19 looking for f/t work %	Aged 20 and over looking for f/t work %	Total looking for f/t work %	Looking for p/t work %	Total %	Aged 15-19 looking for f/t work %	Aged 20 and over looking for f/t work %
MALES												
2001												
November	44.5	281.6	326.1	60.7	386.8	24.6	6.2	6.9	7.6	7.0	6.4	4.1
December	41.4	274.8	316.2	59.6	375.7	22.1	6.0	6.7	7.6	6.8	5.9	4.0
2002												
January	39.3	283.9	323.2	68.5	391.8	21.6	6.2	6.8	8.7	7.1	5.6	4.1
February	45.5	275.3	320.9	61.6	382.4	24.5	6.0	6.8	7.6	6.9	6.5	3.9
March	36.2	270.0	306.3	62.5	368.8	19.3	5.9	6.5	7.6	6.6	5.2	3.9
April	38.4	266.3	304.8	66.3	371.0	21.1	5.9	6.4	8.1	6.7	5.5	3.8
May	36.5	265.4	301.9	64.2	366.1	19.8	5.8	6.3	8.1	6.6	5.2	3.8
June	34.2	270.0	304.2	59.6	363.8	18.8	5.9	6.4	7.1	6.5	4.9	3.9
July	34.7	255.0	289.7	54.2	343.9	19.5	5.6	6.2	6.5	6.2	5.0	3.6
August	35.6	246.3	281.9	72.4	354.3	20.1	5.4	6.0	8.5	6.4	5.1	3.5
September	32.4	251.6	284.0	62.2	346.3	18.7	5.5	6.0	7.5	6.2	4.6	3.6
October	38.7	239.9	278.6	59.9	338.5	21.4	5.3	5.9	7.1	6.1	5.5	3.4
November	36.3	241.2	277.6	63.0	340.6	20.9	5.3	5.9	7.4	6.1	5.2	3.4
December	37.4	251.1	288.5	64.2	352.6	20.4	5.5	6.1	7.6	6.3	5.3	3.6
2003												
January	40.1	248.6	288.7	63.3	352.0	21.6	5.4	6.0	7.7	6.2	5.7	3.5
FEMALES												
2001												
November	30.6	153.4	184.0	100.1	284.1	26.1	6.7	7.6	5.2	6.6	4.6	2.1
December	27.2	155.0	182.3	107.3	289.5	25.0	6.8	7.6	5.5	6.7	4.1	2.2
2002												
January	32.4	162.9	195.3	105.4	300.7	28.5	7.0	8.0	5.4	6.8	4.9	2.3
February	27.2	153.5	180.7	89.4	270.1	25.6	6.7	7.5	4.6	6.2	4.1	2.1
March	30.6	137.2	167.8	85.7	253.5	28.4	5.9	6.9	4.4	5.8	4.6	1.9
April	26.0	142.6	168.6	82.0	250.6	25.9	6.2	7.1	4.2	5.8	3.9	2.0
May	27.6	134.9	162.6	93.8	256.4	25.6	5.9	6.7	4.8	5.9	4.1	1.9
June	34.3	153.8	188.1	92.0	280.1	30.4	6.7	7.8	4.6	6.4	5.1	2.1
July	24.0	143.6	167.6	97.9	265.4	23.1	6.3	7.0	5.0	6.1	3.6	2.0
August	27.9	147.9	175.9	92.6	268.4	25.9	6.3	7.2	4.7	6.1	4.2	2.0
September	27.3	141.9	169.1	101.7	270.9	25.7	6.0	6.9	5.2	6.1	4.1	1.9
October	26.8	130.6	157.4	102.8	260.2	25.3	5.7	6.5	5.1	5.9	4.0	1.8
November	27.6	153.1	180.6	95.5	276.2	25.3	6.5	7.3	4.8	6.2	4.1	2.1
December	22.1	150.8	172.9	103.0	275.8	21.2	6.4	7.0	5.1	6.1	3.3	2.1
2003												
January	31.0	148.1	179.1	88.8	267.9	27.7	6.2	7.2	4.3	5.9	4.6	2.0
PERSONS												
2001												
November	75.1	434.9	510.1	160.8	670.9	25.2	6.3	7.1	5.9	6.8	5.5	3.1
December	68.6	429.8	498.4	166.9	665.3	23.2	6.3	7.0	6.1	6.7	5.0	3.0
2002												
January	71.7	446.8	518.6	174.0	692.5	24.3	6.5	7.2	6.3	7.0	5.3	3.2
February	72.8	428.8	501.6	150.9	652.5	24.9	6.2	7.0	5.4	6.6	5.3	3.0
March	66.9	407.2	474.1	148.2	622.3	22.6	5.9	6.6	5.4	6.3	4.9	2.9
April	64.5	408.9	473.4	148.2	621.6	22.8	6.0	6.6	5.4	6.3	4.7	2.9
May	64.1	400.4	464.5	158.0	622.5	21.9	5.8	6.5	5.8	6.3	4.7	2.8
June	68.5	423.8	492.3	151.6	643.9	23.3	6.2	6.9	5.4	6.5	5.0	3.0
July	58.7	398.6	457.3	152.0	609.4	20.8	5.9	6.4	5.4	6.2	4.3	2.8
August	63.5	394.2	457.7	165.0	622.7	22.3	5.7	6.4	5.9	6.2	4.6	2.8
September	59.7	393.5	453.2	163.9	617.1	21.4	5.7	6.3	5.9	6.2	4.4	2.7
October	65.5	370.5	436.0	162.7	598.6	22.8	5.4	6.1	5.7	6.0	4.8	2.6
November	63.9	394.3	458.2	158.6	616.8	22.6	5.7	6.4	5.6	6.1	4.7	2.7
December	59.5	401.9	461.3	167.1	628.4	20.7	5.8	6.4	5.8	6.2	4.3	2.8
2003												
January	71.1	396.7	467.8	152.1	619.9	23.9	5.6	6.4	5.3	6.1	5.2	2.8

UNEMPLOYED PERSONS: Trend(a)

Month	NUMBER OF UNEMPLOYED PERSONS.....					UNEMPLOYMENT RATE.....					UNEMPLOYMENT TO POPULATION RATIO	
	Aged 15-19 looking for f/t work	Aged 20 and over looking for f/t work	Total looking for f/t work	Looking for p/t work	Total	Aged 15-19 looking for f/t work	Aged 20 and over looking for f/t work	Total looking for f/t work	Looking for p/t work	Total	Aged 15-19 looking for f/t work	Aged 20 and over looking for f/t work
	'000	'000	'000	'000	'000	%	%	%	%	%	%	%
MALES												
2001												
November	44.9	282.1	327.0	62.0	389.0	23.9	6.2	6.9	7.8	7.0	6.4	4.1
December	43.7	280.3	323.9	62.5	386.4	23.5	6.1	6.8	7.9	7.0	6.3	4.0
2002												
January	42.1	277.8	319.9	63.4	383.3	22.7	6.1	6.7	8.0	6.9	6.0	4.0
February	40.3	275.3	315.6	63.8	379.4	21.8	6.0	6.6	8.0	6.8	5.8	3.9
March	38.9	272.4	311.3	63.6	374.9	21.1	6.0	6.5	7.9	6.7	5.6	3.9
April	37.6	269.3	306.9	63.1	370.0	20.4	5.9	6.5	7.7	6.6	5.4	3.9
May	36.3	265.8	302.0	62.6	364.7	19.8	5.8	6.4	7.6	6.6	5.2	3.8
June	35.2	261.3	296.5	62.2	358.7	19.5	5.7	6.3	7.5	6.4	5.0	3.7
July	34.6	256.3	290.9	62.1	353.0	19.4	5.6	6.2	7.5	6.3	5.0	3.7
August	34.7	251.6	286.4	62.4	348.7	19.6	5.5	6.1	7.4	6.3	5.0	3.6
September	35.3	248.0	283.3	62.6	345.9	20.0	5.5	6.0	7.4	6.2	5.1	3.5
October	36.1	245.8	281.9	63.0	344.9	20.3	5.4	6.0	7.5	6.2	5.2	3.5
November	37.0	245.0	282.0	63.2	345.2	20.7	5.4	5.9	7.5	6.2	5.3	3.5
December	37.9	245.0	283.0	63.3	346.3	21.0	5.3	5.9	7.5	6.2	5.4	3.5
2003												
January	38.7	246.2	284.9	63.4	348.4	21.2	5.4	6.0	7.6	6.2	5.5	3.5
FEMALES												
2001												
November	30.5	156.8	187.3	101.3	288.6	26.4	6.8	7.7	5.3	6.6	4.6	2.2
December	29.9	155.9	185.8	100.6	286.4	26.4	6.8	7.7	5.2	6.6	4.5	2.2
2002												
January	29.5	153.3	182.8	97.8	280.6	26.7	6.7	7.6	5.0	6.4	4.4	2.1
February	29.1	149.8	178.9	94.0	272.9	26.9	6.5	7.4	4.8	6.3	4.4	2.1
March	28.8	146.3	175.1	90.5	265.7	27.0	6.4	7.3	4.6	6.1	4.3	2.0
April	28.7	144.1	172.8	88.6	261.4	27.0	6.3	7.2	4.5	6.0	4.3	2.0
May	28.6	143.1	171.7	89.1	260.9	26.9	6.2	7.1	4.6	6.0	4.3	2.0
June	28.4	143.0	171.4	91.5	262.9	26.6	6.2	7.1	4.7	6.0	4.3	2.0
July	28.0	143.3	171.4	94.9	266.2	26.2	6.2	7.1	4.8	6.1	4.2	2.0
August	27.5	143.7	171.3	97.6	268.8	25.7	6.2	7.1	5.0	6.1	4.1	2.0
September	27.0	143.8	170.8	98.8	269.6	25.3	6.2	7.0	5.0	6.1	4.0	2.0
October	26.6	144.1	170.8	99.0	269.8	24.9	6.2	7.0	5.0	6.1	4.0	2.0
November	26.5	145.2	171.7	98.5	270.3	24.8	6.2	7.0	4.9	6.1	4.0	2.0
December	26.6	146.5	173.1	97.6	270.8	24.7	6.2	7.0	4.8	6.0	4.0	2.0
2003												
January	27.3	148.5	175.8	96.2	272.0	25.1	6.3	7.1	4.7	6.0	4.1	2.0
PERSONS												
2001												
November	75.4	438.8	514.2	163.3	677.6	24.9	6.4	7.2	6.0	6.9	5.5	3.1
December	73.6	436.1	509.7	163.1	672.8	24.6	6.4	7.1	6.0	6.8	5.4	3.1
2002												
January	71.5	431.2	502.7	161.2	663.9	24.2	6.3	7.0	5.9	6.7	5.2	3.0
February	69.4	425.1	494.5	157.8	652.3	23.7	6.2	6.9	5.7	6.6	5.1	3.0
March	67.7	418.7	486.4	154.1	640.6	23.2	6.1	6.8	5.6	6.5	5.0	2.9
April	66.3	413.4	479.7	151.8	631.4	22.8	6.0	6.7	5.5	6.4	4.9	2.9
May	64.9	408.9	473.8	151.8	625.6	22.4	6.0	6.6	5.5	6.3	4.8	2.9
June	63.6	404.2	467.9	153.7	621.6	22.1	5.9	6.5	5.5	6.3	4.7	2.8
July	62.7	399.6	462.3	157.0	619.3	21.9	5.8	6.5	5.6	6.2	4.6	2.8
August	62.3	395.3	457.6	159.9	617.5	21.9	5.8	6.4	5.7	6.2	4.6	2.8
September	62.3	391.7	454.0	161.5	615.5	22.0	5.7	6.3	5.7	6.2	4.6	2.7
October	62.7	389.9	452.7	162.0	614.7	22.1	5.7	6.3	5.7	6.1	4.6	2.7
November	63.6	390.2	453.8	161.7	615.5	22.2	5.6	6.3	5.7	6.1	4.6	2.7
December	64.6	391.6	456.1	161.0	617.1	22.4	5.6	6.3	5.6	6.1	4.7	2.7
2003												
January	66.0	394.7	460.8	159.6	620.4	22.7	5.7	6.3	5.6	6.1	4.8	2.7

(a) Trend estimates for July 2002 to December 2002 have been revised.

PERSONS AGED 15 TO 19, Education and Labour Force: **Original**—January 2003

	EMPLOYED.....			UNEMPLOYED.....			Labour force	Not in labour force	Civilian population aged 15-19	Unemployment rate	Participation rate
	Full time	Part time	Total	Looking for f/t work	Looking for p/t work	Total					
	'000	'000	'000	'000	'000	'000	'000	'000	'000	%	%
ATTENDING NEITHER SCHOOL NOR A TERTIARY EDUCATIONAL INSTITUTION FULL TIME											
Males	139.2	56.0	195.2	42.7	7.2	49.9	245.1	40.1	285.3	20.4	85.9
Females	77.4	84.2	161.6	29.2	6.1	35.3	196.9	46.4	243.2	17.9	80.9
Persons	216.6	140.2	356.8	72.0	13.2	85.2	442.0	86.5	528.5	19.3	83.6
ATTENDING A TERTIARY EDUCATIONAL INSTITUTION FULL TIME											
Males	8.4	46.2	54.6	* 3.8	8.1	11.9	66.5	35.2	101.6	17.9	65.4
Females	11.9	62.0	73.9	* 3.1	8.9	12.0	85.9	32.5	118.4	14.0	72.6
Persons	20.4	108.1	128.5	6.8	17.1	23.9	152.4	67.6	220.0	15.7	69.3
ATTENDING SCHOOL											
Males	8.5	90.1	98.5	* 4.0	18.7	22.8	121.3	192.8	314.1	18.8	38.6
Females	5.4	128.3	133.7	* 3.7	19.5	23.2	156.9	152.8	309.7	14.8	50.7
Persons	13.8	218.4	232.2	7.7	38.3	46.0	278.2	345.6	623.8	16.5	44.6
TOTAL											
Males	156.1	192.2	348.3	50.5	34.0	84.6	432.9	268.1	701.0	19.5	61.8
Females	94.7	274.5	369.2	35.9	34.6	70.5	439.7	231.7	671.3	16.0	65.5
Persons	250.8	466.7	717.5	86.5	68.6	155.1	872.6	499.7	1 372.3	17.8	63.6

LABOUR FORCE STATUS (AGED 15 & OVER), States & Territories: **Original**—January 2003

	EMPLOYED.....			UNEMPLOYED.....			Labour force '000	Not in labour force '000	Civilian population aged 15 and over '000	Unemp- loyment rate %	Partic- ipation rate %
	Full time	Part time	Total	Looking for f/t work	Looking for p/t work	Total					
	'000	'000	'000	'000	'000	'000					
MALES											
New South Wales	1 505.6	242.0	1 747.5	104.0	18.8	122.8	1 870.3	745.2	2 615.5	6.6	71.5
Victoria	1 137.3	182.0	1 319.3	71.8	14.4	86.3	1 405.6	546.0	1 951.6	6.1	72.0
Queensland	846.9	147.6	994.5	61.4	14.4	75.8	1 070.3	387.9	1 458.2	7.1	73.4
South Australia	336.0	51.0	387.0	26.2	4.2	30.5	417.5	183.4	600.9	7.3	69.5
Western Australia	468.2	77.6	545.8	35.9	7.9	43.7	589.5	185.4	774.9	7.4	76.1
Tasmania	96.6	14.4	110.9	10.8	2.1	12.8	123.7	58.5	182.3	10.4	67.9
Northern Territory	43.7	9.2	52.9	2.2	1.3	3.5	56.4	17.3	73.7	6.2	76.5
Australian Capital Territory	77.1	12.2	89.3	4.4	* 0.9	5.3	94.6	27.4	122.0	5.6	77.5
Australia	4 511.4	736.0	5 247.3	316.7	63.9	380.6	5 627.9	2 151.2	7 779.1	6.8	72.3
FEMALES											
New South Wales	789.6	591.8	1 381.4	60.6	26.6	87.2	1 468.6	1 216.8	2 685.4	5.9	54.7
Victoria	589.3	482.9	1 072.2	45.3	15.3	60.6	1 132.8	887.4	2 020.2	5.4	56.1
Queensland	441.5	344.7	786.2	44.6	19.4	64.0	850.2	644.7	1 494.9	7.5	56.9
South Australia	163.1	149.4	312.5	12.3	6.6	18.8	331.4	294.4	625.8	5.7	53.0
Western Australia	221.3	207.7	429.0	18.4	8.4	26.8	455.8	320.1	775.9	5.9	58.7
Tasmania	44.6	44.5	89.2	5.5	2.1	7.6	96.7	96.6	193.3	7.8	50.0
Northern Territory	29.7	11.9	41.6	2.6	1.0	3.6	45.2	23.1	68.3	8.0	66.2
Australian Capital Territory	53.2	27.1	80.3	2.1	1.5	3.6	83.9	43.5	127.4	4.2	65.8
Australia	2 332.3	1 860.0	4 192.3	191.3	80.9	272.2	4 464.5	3 526.6	7 991.1	6.1	55.9
PERSONS											
New South Wales	2 295.2	833.7	3 128.9	164.6	45.4	210.0	3 338.9	1 962.0	5 300.8	6.3	63.0
Victoria	1 726.6	664.9	2 391.5	117.2	29.7	146.9	2 538.4	1 433.4	3 971.8	5.8	63.9
Queensland	1 288.4	492.3	1 780.7	106.0	33.8	139.7	1 920.5	1 032.6	2 953.1	7.3	65.0
South Australia	499.1	200.4	699.5	38.5	10.8	49.3	748.8	477.8	1 226.7	6.6	61.0
Western Australia	689.5	285.3	974.8	54.2	16.3	70.5	1 045.3	505.5	1 550.8	6.7	67.4
Tasmania	141.2	58.9	200.1	16.2	4.2	20.4	220.5	155.1	375.6	9.3	58.7
Northern Territory	73.4	21.1	94.5	4.8	2.3	7.1	101.6	40.4	142.0	7.0	71.6
Australian Capital Territory	130.3	39.3	169.6	6.4	2.4	8.8	178.4	70.9	249.3	4.9	71.6
Australia	6 843.7	2 596.0	9 439.7	507.9	144.8	652.7	10 092.4	5 677.7	15 770.1	6.5	64.0

UNEMPLOYED PERSONS—New South Wales, Victoria and Queensland: **Original**

Month	NUMBER OF UNEMPLOYED PERSONS.....					UNEMPLOYMENT RATE.....					UNEMPLOYMENT TO POPULATION RATIO	
	Aged 15-19 looking for f/t work	Aged 20 and over looking for f/t work	Total looking for f/t work	Looking for p/t work	Total	Aged 15-19 looking for f/t work	Aged 20 and over looking for f/t work	Total looking for f/t work	Looking for p/t work	Total	Aged 15-19 looking for f/t work	Aged 20 and over looking for f/t work
	'000	'000	'000	'000	'000	%	%	%	%	%	%	%
NEW SOUTH WALES												
2001												
November	22.0	135.3	157.3	42.2	199.5	26.1	5.9	6.6	4.9	6.1	4.9	2.8
December	21.9	128.2	150.1	50.0	200.1	22.3	5.5	6.1	5.9	6.1	4.9	2.7
2002												
January	26.5	147.2	173.6	48.2	221.8	25.7	6.3	7.1	5.9	6.8	5.9	3.1
February	21.6	146.3	167.9	50.5	218.4	22.3	6.2	6.9	5.9	6.6	4.8	3.1
March	21.6	128.1	149.8	59.9	209.7	24.7	5.5	6.2	6.9	6.4	4.8	2.7
April	23.8	124.6	148.3	48.4	196.7	28.4	5.4	6.2	5.4	6.0	5.3	2.6
May	19.3	128.9	148.2	48.2	196.3	21.7	5.5	6.1	5.6	6.0	4.3	2.7
June	21.6	130.9	152.5	45.9	198.4	25.0	5.7	6.4	5.0	6.0	4.8	2.7
July	16.2	119.7	135.8	45.8	181.6	18.7	5.1	5.6	5.2	5.5	3.6	2.5
August	15.2	118.8	134.0	40.9	174.9	19.1	5.1	5.6	4.7	5.4	3.4	2.5
September	15.9	130.7	146.6	52.9	199.5	18.8	5.5	6.0	6.0	6.0	3.5	2.7
October	19.7	107.1	126.8	44.2	171.0	23.9	4.7	5.3	4.9	5.2	4.4	2.2
November	19.1	128.5	147.6	44.2	191.8	22.6	5.5	6.1	4.9	5.8	4.2	2.7
December	24.0	133.3	157.3	46.3	203.6	23.1	5.6	6.3	5.2	6.0	5.3	2.8
2003												
January	28.1	136.5	164.6	45.4	210.0	25.9	5.8	6.7	5.2	6.3	6.2	2.8
VICTORIA												
2001												
November	15.7	95.2	110.9	36.4	147.3	24.9	5.5	6.2	5.4	6.0	4.7	2.7
December	20.3	97.6	117.9	43.3	161.2	26.1	5.5	6.4	6.5	6.4	6.1	2.7
2002												
January	15.8	109.3	125.1	45.2	170.2	22.2	6.3	6.9	6.8	6.8	4.8	3.1
February	15.3	112.7	128.0	45.9	173.9	23.6	6.4	7.1	6.7	7.0	4.6	3.1
March	14.3	102.1	116.5	39.7	156.2	23.5	5.9	6.5	5.6	6.2	4.3	2.8
April	11.7	92.0	103.7	40.1	143.8	20.5	5.3	5.8	5.7	5.8	3.5	2.6
May	12.3	88.6	100.9	41.3	142.2	22.0	5.1	5.7	5.8	5.7	3.7	2.5
June	11.1	106.9	118.0	32.1	150.1	19.3	6.2	6.6	4.5	6.0	3.3	3.0
July	9.5	83.3	92.8	31.3	124.1	15.8	4.8	5.2	4.5	5.0	2.9	2.3
August	10.8	96.8	107.5	40.3	147.8	19.7	5.6	6.0	5.6	5.9	3.2	2.7
September	9.8	96.3	106.1	45.4	151.5	17.9	5.5	5.8	6.3	6.0	2.9	2.7
October	11.6	87.3	98.9	39.7	138.7	19.4	5.1	5.6	5.5	5.5	3.5	2.4
November	14.1	88.0	102.1	31.3	133.4	23.3	5.1	5.7	4.4	5.3	4.2	2.4
December	15.0	92.5	107.5	38.1	145.7	21.4	5.2	5.8	5.3	5.6	4.5	2.5
2003												
January	15.3	101.9	117.2	29.7	146.9	23.5	5.7	6.4	4.3	5.8	4.6	2.8
QUEENSLAND												
2001												
November	14.9	93.4	108.3	31.1	139.4	23.5	7.3	8.1	6.0	7.5	5.6	3.6
December	22.5	94.8	117.3	35.4	152.7	29.5	7.3	8.6	6.7	8.0	8.5	3.6
2002												
January	20.0	108.0	128.0	32.0	160.0	27.9	8.4	9.4	6.4	8.6	7.5	4.1
February	25.0	106.3	131.3	36.4	167.7	31.5	8.2	9.5	7.0	8.8	9.4	4.1
March	16.3	97.8	114.1	37.7	151.8	22.7	7.6	8.4	7.1	8.0	6.1	3.7
April	12.5	95.6	108.1	37.6	145.7	18.3	7.5	8.0	7.1	7.8	4.7	3.6
May	14.7	89.5	104.2	38.2	142.4	22.6	7.0	7.8	7.0	7.6	5.5	3.4
June	15.0	88.8	103.8	35.5	139.3	23.4	6.9	7.7	6.5	7.3	5.6	3.4
July	13.3	80.3	93.6	30.2	123.9	19.8	6.3	7.0	5.7	6.6	5.0	3.0
August	13.4	79.4	92.8	36.7	129.5	21.3	6.3	7.0	6.7	6.9	5.0	3.0
September	13.6	78.4	91.9	39.7	131.7	22.7	6.0	6.8	7.1	6.9	5.1	2.9
October	13.7	77.2	90.9	36.5	127.4	21.5	6.0	6.7	6.6	6.7	5.1	2.9
November	11.8	76.6	88.4	34.9	123.3	20.9	5.9	6.6	6.3	6.5	4.4	2.9
December	17.6	77.3	94.9	41.9	136.9	23.4	6.0	6.9	7.4	7.1	6.6	2.9
2003												
January	20.5	85.5	106.0	33.8	139.7	26.2	6.5	7.6	6.4	7.3	7.6	3.2

UNEMPLOYED PERSONS—South Australia, Western Australia and Tasmania: **Original**

Month	NUMBER OF UNEMPLOYED PERSONS.....					UNEMPLOYMENT RATE.....					UNEMPLOYMENT TO POPULATION RATIO	
	Aged 15-19 looking for f/t work	Aged 20 and over looking for f/t work	Total looking for f/t work	Looking for p/t work	Total	Aged 15-19 looking for f/t work	Aged 20 and over looking for f/t work	Total looking for f/t work	Looking for p/t work	Total	Aged 15-19 looking for f/t work	Aged 20 and over looking for f/t work
	'000	'000	'000	'000	'000	%	%	%	%	%	%	%
SOUTH AUSTRALIA												
2001												
November	5.2	32.9	38.1	10.8	49.0	24.5	6.6	7.4	5.0	6.7	5.0	3.0
December	7.1	32.7	39.7	12.5	52.2	27.2	6.6	7.6	5.6	7.0	6.8	2.9
2002												
January	9.4	34.1	43.5	12.7	56.3	33.0	7.0	8.4	5.9	7.7	9.1	3.1
February	7.8	37.6	45.5	11.5	56.9	33.8	7.6	8.8	5.1	7.7	7.6	3.4
March	5.1	33.0	38.1	11.9	50.0	26.4	6.8	7.5	5.1	6.8	4.9	3.0
April	6.5	32.4	38.8	9.8	48.6	30.0	6.7	7.7	4.1	6.5	6.3	2.9
May	6.7	32.9	39.6	10.9	50.5	32.2	6.7	7.7	4.8	6.8	6.5	3.0
June	5.8	32.5	38.3	11.1	49.4	28.3	6.7	7.6	4.7	6.7	5.6	2.9
July	4.3	31.4	35.7	8.7	44.5	20.8	6.4	7.0	3.9	6.1	4.2	2.8
August	4.5	33.0	37.6	11.3	48.9	21.8	6.7	7.3	5.1	6.7	4.4	3.0
September	5.4	32.1	37.5	10.6	48.1	24.0	6.5	7.2	4.6	6.4	5.2	2.9
October	4.4	29.8	34.1	11.0	45.1	19.9	6.1	6.7	4.8	6.1	4.2	2.7
November	4.3	29.5	33.8	9.8	43.7	19.3	6.0	6.6	4.3	5.9	4.1	2.6
December	5.1	25.9	30.9	10.9	41.9	20.4	5.1	5.8	4.9	5.6	4.9	2.3
2003												
January	7.2	31.3	38.5	10.8	49.3	25.9	6.1	7.2	5.1	6.6	7.0	2.8
WESTERN AUSTRALIA												
2001												
November	8.4	38.2	46.6	13.7	60.3	23.4	5.6	6.5	4.7	6.0	5.9	2.8
December	8.0	39.7	47.7	13.5	61.2	19.5	5.8	6.6	4.6	6.0	5.6	2.9
2002												
January	9.4	52.2	61.6	17.7	79.3	23.0	7.6	8.4	6.3	7.8	6.6	3.8
February	7.9	48.0	55.9	18.0	73.9	23.0	6.9	7.7	6.0	7.2	5.6	3.5
March	6.6	39.6	46.1	15.3	61.5	20.6	5.9	6.6	5.0	6.1	4.6	2.9
April	6.6	42.6	49.2	15.0	64.2	19.4	6.2	6.9	5.0	6.3	4.6	3.1
May	7.7	40.7	48.3	15.7	64.1	22.4	6.0	6.7	5.4	6.4	5.4	2.9
June	6.8	35.8	42.6	13.9	56.6	18.9	5.4	6.1	4.4	5.6	4.8	2.6
July	6.8	36.6	43.4	11.7	55.1	19.4	5.5	6.2	3.8	5.4	4.8	2.6
August	7.3	36.7	44.0	18.7	62.8	24.8	5.4	6.2	6.0	6.2	5.1	2.6
September	6.2	42.5	48.7	17.0	65.7	20.6	6.2	6.8	5.4	6.3	4.4	3.0
October	4.6	37.4	42.0	15.1	57.1	15.4	5.5	5.9	4.8	5.6	3.2	2.7
November	7.1	36.0	43.1	13.6	56.8	22.5	5.3	6.1	4.3	5.6	5.0	2.6
December	6.3	39.2	45.5	17.6	63.2	17.9	5.6	6.2	5.6	6.0	4.4	2.8
2003												
January	10.6	43.6	54.2	16.3	70.5	26.1	6.2	7.3	5.4	6.7	7.4	3.1
TASMANIA												
2001												
November	2.9	13.1	16.0	2.7	18.7	31.1	9.0	10.3	4.2	8.5	8.5	3.9
December	2.3	13.4	15.7	3.0	18.7	22.6	9.1	10.0	4.7	8.5	6.8	3.9
2002												
January	3.2	13.9	17.1	3.8	20.9	31.1	9.5	11.0	6.2	9.6	9.4	4.1
February	2.4	13.5	15.9	3.8	19.7	27.1	9.3	10.3	6.0	9.0	7.0	4.0
March	2.2	11.9	14.1	3.6	17.7	22.5	8.3	9.2	5.8	8.2	6.3	3.5
April	1.7	12.0	13.8	2.8	16.6	19.9	8.6	9.3	4.3	7.7	5.1	3.5
May	1.8	12.3	14.1	3.4	17.4	20.1	8.8	9.5	5.0	8.1	5.2	3.6
June	1.8	12.9	14.7	2.9	17.6	21.3	9.3	10.0	4.2	8.1	5.2	3.8
July	2.1	13.8	15.8	2.9	18.7	24.0	10.0	10.8	4.3	8.7	6.1	4.0
August	1.9	13.7	15.6	3.5	19.0	24.8	9.7	10.4	5.2	8.8	5.5	4.0
September	2.0	13.9	15.9	4.4	20.3	23.2	9.5	10.2	7.0	9.3	6.0	4.1
October	2.2	11.2	13.4	4.2	17.6	30.1	7.8	8.9	6.4	8.2	6.6	3.3
November	2.6	11.5	14.1	2.6	16.6	30.3	7.9	9.2	4.0	7.7	7.6	3.4
December	3.2	13.4	16.6	4.6	21.1	33.5	8.9	10.3	6.9	9.3	9.3	3.9
2003												
January	3.0	13.2	16.2	4.2	20.4	31.1	8.9	10.3	6.6	9.3	8.9	3.9

UNEMPLOYED PERSONS—Northern Territory and Australian Capital Territory: **Original**

Month	NUMBER OF UNEMPLOYED PERSONS.....					UNEMPLOYMENT RATE.....					UNEMPLOYMENT TO POPULATION RATIO	
	<i>Aged 15-19 looking for f/t work</i>	<i>Aged 20 and over looking for f/t work</i>	<i>Total looking for f/t work</i>	<i>Looking for p/t work</i>	<i>Total</i>	<i>Aged 15-19 looking for f/t work</i>	<i>Aged 20 and over looking for f/t work</i>	<i>Total looking for f/t work</i>	<i>Looking for p/t work</i>	<i>Total</i>	<i>Aged 15-19 looking for f/t work</i>	<i>Aged 20 and over looking for f/t work</i>
	'000	'000	'000	'000	'000	%	%	%	%	%	%	%
NORTHERN TERRITORY												
2001												
November	* 0.9	4.5	5.5	3.1	8.6	* 28.2	6.1	7.0	11.1	8.1	* 6.4	3.5
December	1.0	4.1	5.0	3.1	8.2	25.8	5.5	6.5	10.7	7.6	6.6	3.2
2002												
January	1.4	4.8	6.2	3.7	9.9	34.4	6.5	8.0	13.6	9.4	9.6	3.8
February	* 0.8	3.8	4.6	2.3	6.9	* 28.3	5.3	6.2	7.9	6.7	* 5.6	3.0
March	1.1	4.1	5.2	1.8	7.0	32.0	5.6	6.7	6.2	6.6	7.4	3.2
April	* 0.6	4.8	5.5	1.1	6.6	* 18.6	6.5	7.0	3.9	6.2	* 4.2	3.8
May	* 0.6	2.9	3.5	1.2	4.7	* 24.4	3.8	4.5	4.1	4.4	* 4.3	2.2
June	* 0.9	3.1	4.0	* 0.9	4.8	* 29.3	4.1	5.0	* 3.2	4.6	* 5.9	2.4
July	* 0.4	2.4	2.8	1.3	4.1	* 12.6	3.1	3.5	5.3	3.9	* 2.6	1.9
August	* 0.9	2.4	3.4	1.3	4.7	* 27.5	3.3	4.4	4.8	4.5	* 6.4	1.9
September	* 0.6	2.3	2.9	1.3	4.2	* 26.1	3.0	3.7	4.8	4.0	* 4.2	1.8
October	* 0.9	3.5	4.4	1.4	5.8	* 36.4	4.5	5.5	5.8	5.6	* 6.5	2.7
November	* 0.8	1.9	2.7	1.4	4.1	* 29.1	2.4	3.3	5.4	3.8	* 5.6	1.5
December	1.2	3.2	4.4	2.0	6.4	30.3	4.3	5.5	7.8	6.1	7.9	2.5
2003												
January	* 0.5	4.4	4.8	2.3	7.1	* 16.9	5.8	6.2	9.7	7.0	* 3.3	3.4
AUSTRALIAN CAPITAL TERRITORY												
2001												
November	* 0.9	3.9	4.8	2.0	6.7	* 22.0	3.1	3.7	4.5	3.9	* 3.7	1.7
December	* 1.0	4.2	5.2	2.0	7.2	* 22.0	3.3	3.9	4.2	4.0	* 4.3	1.9
2002												
January	1.6	5.2	6.7	2.0	8.7	29.2	4.1	5.2	4.8	5.1	6.6	2.3
February	1.2	4.3	5.5	3.4	8.9	25.2	3.4	4.2	7.5	5.1	5.0	1.9
March	* 0.8	4.0	4.9	3.2	8.1	* 21.8	3.2	3.8	6.9	4.6	* 3.5	1.8
April	* 0.3	4.3	4.6	3.3	7.9	* 8.9	3.4	3.5	7.1	4.5	* 1.3	1.9
May	* 0.3	5.6	5.8	2.9	8.8	* 7.6	4.3	4.4	6.4	4.9	* 1.1	2.5
June	* 0.7	4.3	5.0	3.2	8.2	* 18.2	3.4	3.9	6.3	4.6	* 2.9	1.9
July	* 0.4	3.7	4.1	1.6	5.7	* 11.0	2.8	3.1	3.5	3.2	* 1.8	1.6
August	* 0.7	5.6	6.3	2.1	8.4	* 23.5	4.3	4.7	4.4	4.6	* 3.1	2.5
September	* 0.7	4.3	5.0	2.4	7.4	* 20.8	3.2	3.6	5.3	4.0	* 3.0	1.9
October	* 0.5	4.9	5.5	1.7	7.2	* 15.1	3.7	4.0	3.9	4.0	* 2.3	2.2
November	* 0.5	4.4	4.9	2.0	6.9	* 16.1	3.3	3.5	4.7	3.8	* 2.0	2.0
December	* 0.4	3.1	3.5	1.8	5.3	* 11.7	2.3	2.5	3.9	2.9	* 1.9	1.4
2003												
January	1.3	5.1	6.4	2.4	8.8	28.5	3.9	4.7	5.7	4.9	5.6	2.3

LABOUR FORCE STATUS (AGED 15 AND OVER)—New South Wales(a)

Month	SEASONALLY ADJUSTED.....					TREND.....					Civilian population aged 15 and over '000
	Employed full time '000	Total employed '000	Total unemployed '000	Unemp- loyment rate %	Partic- ipation rate %	Employed full time '000	Total employed '000	Total unemployed '000	Unemp- loyment rate %	Partic- ipation rate %	
MALES											
2001											
November	1 479.9	1 719.0	118.1	6.4	71.3	1 488.0	1 720.9	114.5	6.2	71.2	2 577.3
December	1 492.5	1 721.2	108.2	5.9	70.9	1 491.1	1 722.6	115.0	6.3	71.2	2 580.3
2002											
January	1 496.6	1 721.2	113.5	6.2	71.0	1 493.4	1 725.0	115.8	6.3	71.3	2 582.7
February	1 503.4	1 738.0	117.2	6.3	71.8	1 494.6	1 727.8	117.2	6.4	71.4	2 585.0
March	1 489.3	1 727.9	120.9	6.5	71.5	1 494.6	1 730.9	118.7	6.4	71.5	2 587.4
April	1 486.6	1 730.0	120.4	6.5	71.4	1 493.8	1 733.6	119.8	6.5	71.5	2 590.7
May	1 505.1	1 737.2	119.6	6.4	71.6	1 492.9	1 736.1	119.2	6.4	71.5	2 593.9
June	1 482.8	1 741.0	120.1	6.5	71.7	1 492.9	1 738.8	116.5	6.3	71.4	2 597.1
July	1 492.8	1 738.0	115.8	6.2	71.3	1 494.0	1 741.5	112.5	6.1	71.3	2 600.0
August	1 499.7	1 750.5	99.8	5.4	71.1	1 496.0	1 744.2	109.0	5.9	71.2	2 602.9
September	1 502.5	1 739.1	111.3	6.0	71.0	1 498.4	1 746.8	106.9	5.8	71.1	2 605.7
October	1 494.9	1 754.9	99.3	5.4	71.1	1 501.1	1 749.3	106.5	5.7	71.2	2 608.1
November	1 504.9	1 752.7	105.9	5.7	71.2	1 504.1	1 752.1	107.3	5.8	71.2	2 610.5
December	1 505.6	1 746.3	116.1	6.2	71.3	1 507.1	1 754.9	108.5	5.8	71.3	2 612.9
2003											
January	1 514.0	1 766.1	110.8	5.9	71.8	1 509.2	1 757.6	110.3	5.9	71.4	2 615.5
FEMALES											
2001											
November	762.7	1 337.8	89.5	6.3	53.9	764.0	1 338.1	92.2	6.4	54.0	2 649.2
December	759.0	1 334.7	90.7	6.4	53.8	763.7	1 341.0	90.0	6.3	54.0	2 651.9
2002											
January	787.9	1 378.3	97.3	6.6	55.6	765.3	1 344.6	86.2	6.0	53.9	2 654.0
February	780.0	1 369.0	75.0	5.2	54.4	767.3	1 348.0	82.7	5.8	53.9	2 656.1
March	781.8	1 354.5	74.8	5.2	53.8	769.1	1 350.8	80.3	5.6	53.8	2 658.2
April	751.7	1 341.1	77.2	5.4	53.3	770.9	1 353.0	79.7	5.6	53.8	2 661.1
May	779.0	1 349.1	80.5	5.6	53.7	772.1	1 354.2	80.5	5.6	53.9	2 663.9
June	767.6	1 356.2	88.2	6.1	54.2	772.8	1 354.9	82.0	5.7	53.9	2 666.8
July	769.0	1 362.1	90.1	6.2	54.4	772.9	1 355.3	83.8	5.8	53.9	2 669.6
August	791.6	1 369.3	75.4	5.2	54.1	773.3	1 357.5	85.0	5.9	54.0	2 672.5
September	775.5	1 351.6	86.6	6.0	53.8	774.0	1 361.8	85.5	5.9	54.1	2 675.4
October	752.8	1 348.5	83.4	5.8	53.5	774.8	1 368.1	86.3	5.9	54.3	2 677.8
November	780.0	1 385.2	94.5	6.4	55.2	776.5	1 376.5	87.2	6.0	54.6	2 680.2
December	783.5	1 383.3	85.9	5.8	54.8	779.2	1 386.2	88.1	6.0	55.0	2 682.6
2003											
January	788.2	1 415.6	88.4	5.9	56.0	781.7	1 395.6	89.0	6.0	55.3	2 685.4
PERSONS											
2001											
November	2 242.6	3 056.8	207.6	6.4	62.5	2 252.1	3 059.1	206.7	6.3	62.5	5 226.5
December	2 251.5	3 055.9	198.9	6.1	62.2	2 254.8	3 063.5	205.0	6.3	62.5	5 232.2
2002											
January	2 284.4	3 099.4	210.8	6.4	63.2	2 258.7	3 069.6	202.1	6.2	62.5	5 236.7
February	2 283.4	3 107.0	192.2	5.8	62.9	2 261.8	3 075.8	199.9	6.1	62.5	5 241.1
March	2 271.1	3 082.4	195.7	6.0	62.5	2 263.7	3 081.7	199.0	6.1	62.5	5 245.6
April	2 238.3	3 071.1	197.6	6.0	62.2	2 264.7	3 086.6	199.5	6.1	62.6	5 251.7
May	2 284.1	3 086.3	200.1	6.1	62.5	2 265.0	3 090.3	199.8	6.1	62.6	5 257.8
June	2 250.4	3 097.2	208.3	6.3	62.8	2 265.6	3 093.7	198.5	6.0	62.5	5 263.9
July	2 261.8	3 100.2	206.0	6.2	62.7	2 266.9	3 096.8	196.3	6.0	62.5	5 269.6
August	2 291.3	3 119.7	175.2	5.3	62.5	2 269.3	3 101.6	194.0	5.9	62.5	5 275.4
September	2 278.0	3 090.8	197.9	6.0	62.3	2 272.5	3 108.6	192.5	5.8	62.5	5 281.1
October	2 247.7	3 103.5	182.8	5.6	62.2	2 275.9	3 117.4	192.8	5.8	62.6	5 285.9
November	2 284.9	3 137.9	200.5	6.0	63.1	2 280.6	3 128.6	194.5	5.9	62.8	5 290.7
December	2 289.1	3 129.6	202.0	6.1	62.9	2 286.3	3 141.1	196.7	5.9	63.0	5 295.6
2003											
January	2 302.2	3 181.7	199.2	5.9	63.8	2 290.9	3 153.3	199.3	5.9	63.3	5 300.8

(a) Trend estimates for July 2002 to December 2002 have been revised.

LABOUR FORCE STATUS (AGED 15 AND OVER)—Victoria(a)

SEASONALLY ADJUSTED.....

TREND.....

Month	SEASONALLY ADJUSTED.....					TREND.....					Civilian population aged 15 and over '000
	Employed full time '000	Total employed '000	Total unemployed '000	Unemp-loyment rate %	Partic-ipation rate %	Employed full time '000	Total employed '000	Total unemployed '000	Unemp-loyment rate %	Partic-ipation rate %	
MALES											
2001											
November	1 125.9	1 305.6	87.8	6.3	72.8	1 124.3	1 306.3	93.0	6.6	73.1	1 913.1
December	1 133.1	1 308.9	88.2	6.3	72.9	1 127.2	1 308.4	91.8	6.6	73.1	1 916.2
2002											
January	1 135.3	1 317.6	94.8	6.7	73.6	1 128.8	1 310.4	89.9	6.4	73.0	1 918.6
February	1 117.8	1 303.7	89.7	6.4	72.5	1 129.4	1 312.2	87.7	6.3	72.9	1 921.1
March	1 131.5	1 317.9	82.2	5.9	72.8	1 129.3	1 313.6	85.6	6.1	72.7	1 923.5
April	1 124.5	1 310.4	82.0	5.9	72.3	1 128.9	1 314.7	84.0	6.0	72.6	1 926.3
May	1 133.7	1 317.1	82.8	5.9	72.6	1 127.8	1 315.0	83.1	5.9	72.5	1 929.1
June	1 130.0	1 319.0	87.5	6.2	72.8	1 125.4	1 313.8	82.7	5.9	72.3	1 931.9
July	1 120.1	1 309.3	76.9	5.5	71.7	1 121.7	1 311.5	83.0	5.9	72.1	1 934.5
August	1 117.7	1 313.3	86.9	6.2	72.3	1 118.2	1 309.5	83.4	6.0	71.9	1 937.0
September	1 119.5	1 309.1	82.2	5.9	71.7	1 116.7	1 309.3	83.5	6.0	71.8	1 939.6
October	1 101.9	1 295.0	86.9	6.3	71.1	1 118.1	1 311.4	83.4	6.0	71.8	1 942.6
November	1 121.1	1 314.7	80.1	5.7	71.7	1 121.8	1 315.2	83.2	6.0	71.9	1 945.6
December	1 134.3	1 333.0	83.4	5.9	72.7	1 126.6	1 319.7	83.0	5.9	72.0	1 948.7
2003											
January	1 140.6	1 327.4	83.0	5.9	72.3	1 131.9	1 324.7	83.2	5.9	72.2	1 951.6
FEMALES											
2001											
November	566.1	1 019.3	71.0	6.5	54.9	563.6	1 016.8	70.6	6.5	54.8	1 984.8
December	557.3	1 014.1	74.5	6.8	54.8	561.4	1 018.7	70.9	6.5	54.8	1 987.4
2002											
January	559.1	1 036.1	71.5	6.5	55.7	558.6	1 021.8	69.9	6.4	54.9	1 989.4
February	549.7	1 027.4	67.9	6.2	55.0	556.0	1 025.4	67.7	6.2	54.9	1 991.5
March	558.5	1 033.2	63.0	5.7	55.0	554.5	1 028.8	65.0	5.9	54.9	1 993.5
April	560.4	1 032.8	59.6	5.5	54.7	554.6	1 031.8	62.9	5.7	54.8	1 996.1
May	553.7	1 040.7	60.1	5.5	55.1	556.4	1 034.6	61.7	5.6	54.9	1 998.7
June	555.5	1 028.8	69.4	6.3	54.9	560.2	1 037.6	61.4	5.6	54.9	2 001.3
July	556.2	1 031.7	54.5	5.0	54.2	565.5	1 040.9	61.5	5.6	55.0	2 003.9
August	580.8	1 059.1	65.1	5.8	56.0	571.7	1 046.0	61.9	5.6	55.2	2 006.6
September	584.6	1 052.0	62.3	5.6	55.5	577.7	1 053.0	62.0	5.6	55.5	2 009.3
October	578.9	1 059.4	59.6	5.3	55.6	582.7	1 061.5	62.1	5.5	55.8	2 012.0
November	586.1	1 063.5	64.0	5.7	56.0	586.1	1 070.5	62.2	5.5	56.2	2 014.8
December	590.0	1 076.3	63.7	5.6	56.5	588.6	1 079.5	62.2	5.4	56.6	2 017.5
2003											
January	587.0	1 103.7	60.5	5.2	57.6	590.1	1 087.5	62.7	5.4	57.0	2 020.2
PERSONS											
2001											
November	1 692.0	2 324.8	158.9	6.4	63.7	1 687.9	2 323.0	163.6	6.6	63.8	3 897.9
December	1 690.4	2 322.9	162.7	6.5	63.7	1 688.6	2 327.1	162.7	6.5	63.8	3 903.5
2002											
January	1 694.5	2 353.7	166.3	6.6	64.5	1 687.3	2 332.3	159.8	6.4	63.8	3 908.0
February	1 667.5	2 331.1	157.6	6.3	63.6	1 685.3	2 337.5	155.4	6.2	63.7	3 912.6
March	1 689.9	2 351.2	145.2	5.8	63.7	1 683.7	2 342.4	150.7	6.0	63.6	3 917.1
April	1 684.9	2 343.1	141.6	5.7	63.3	1 683.5	2 346.5	146.9	5.9	63.6	3 922.5
May	1 687.5	2 357.8	142.9	5.7	63.7	1 684.3	2 349.6	144.8	5.8	63.5	3 927.8
June	1 685.5	2 347.8	156.9	6.3	63.7	1 685.6	2 351.3	144.1	5.8	63.4	3 933.2
July	1 676.3	2 341.0	131.4	5.3	62.8	1 687.2	2 352.4	144.5	5.8	63.4	3 938.4
August	1 698.5	2 372.4	152.1	6.0	64.0	1 689.9	2 355.5	145.3	5.8	63.4	3 943.6
September	1 704.0	2 361.1	144.5	5.8	63.5	1 694.4	2 362.4	145.6	5.8	63.5	3 948.8
October	1 680.8	2 354.4	146.5	5.9	63.2	1 700.8	2 372.9	145.5	5.8	63.7	3 954.6
November	1 707.2	2 378.1	144.1	5.7	63.7	1 707.9	2 385.6	145.4	5.7	63.9	3 960.4
December	1 724.3	2 409.3	147.1	5.8	64.5	1 715.2	2 399.3	145.2	5.7	64.2	3 966.2
2003											
January	1 727.7	2 431.1	143.5	5.6	64.8	1 722.0	2 412.2	145.9	5.7	64.4	3 971.8

(a) Trend estimates for July 2002 to December 2002 have been revised.

LABOUR FORCE STATUS (AGED 15 AND OVER)—Queensland(a)

SEASONALLY ADJUSTED.....

TREND.....

Month	SEASONALLY ADJUSTED.....					TREND.....					Civilian population aged 15 and over '000
	Employed full time '000	Total employed '000	Total unemployed '000	Unemployment rate %	Participation rate %	Employed full time '000	Total employed '000	Total unemployed '000	Unemployment rate %	Participation rate %	
MALES											
2001											
November	811.9	952.7	86.0	8.3	73.0	815.1	955.3	86.8	8.3	73.2	1 422.8
December	816.3	958.5	88.2	8.4	73.5	817.4	958.1	87.3	8.3	73.4	1 424.8
2002											
January	817.5	956.8	89.9	8.6	73.4	819.6	961.2	87.0	8.3	73.5	1 426.8
February	824.8	970.0	85.6	8.1	73.9	822.1	964.9	85.7	8.2	73.5	1 428.8
March	824.8	969.1	82.9	7.9	73.5	824.5	968.9	83.1	7.9	73.5	1 430.8
April	825.3	970.3	79.5	7.6	73.2	826.5	972.8	79.5	7.6	73.4	1 433.3
May	830.9	975.5	76.8	7.3	73.3	827.7	976.0	75.7	7.2	73.3	1 435.8
June	826.9	980.0	72.1	6.8	73.1	828.3	978.4	72.4	6.9	73.1	1 438.3
July	826.0	982.4	66.2	6.3	72.8	828.3	979.9	70.0	6.7	72.9	1 441.1
August	831.8	982.4	70.3	6.7	72.9	828.2	981.1	68.8	6.6	72.7	1 443.9
September	827.9	980.1	67.8	6.5	72.4	828.9	982.7	68.6	6.5	72.7	1 446.7
October	830.0	980.2	69.7	6.6	72.5	830.4	984.8	69.1	6.6	72.7	1 449.2
November	830.4	989.5	68.4	6.5	72.9	832.9	987.7	69.7	6.6	72.8	1 451.7
December	828.3	989.4	72.3	6.8	73.0	835.9	991.0	70.4	6.6	73.0	1 454.2
2003											
January	852.2	1 000.8	71.1	6.6	73.5	839.1	994.1	71.1	6.7	73.1	1 458.2
FEMALES											
2001											
November	413.3	761.3	62.6	7.6	56.7	414.0	763.7	64.0	7.7	56.9	1 454.1
December	413.7	766.0	62.9	7.6	56.9	416.4	765.8	63.3	7.6	56.9	1 456.4
2002											
January	414.2	766.2	62.6	7.5	56.8	419.0	768.2	62.7	7.5	57.0	1 458.7
February	424.9	772.2	65.0	7.8	57.3	421.2	769.7	62.4	7.5	57.0	1 460.9
March	431.3	779.8	60.6	7.2	57.4	422.6	769.9	62.9	7.6	56.9	1 463.2
April	418.2	761.0	62.2	7.6	56.1	422.7	769.1	64.0	7.7	56.8	1 466.1
May	423.5	770.3	63.9	7.7	56.8	422.0	768.7	65.4	7.8	56.8	1 469.0
June	418.4	769.9	70.1	8.3	57.1	421.4	769.7	66.6	8.0	56.8	1 472.0
July	417.7	760.8	68.7	8.3	56.2	421.1	772.2	67.2	8.0	56.9	1 475.1
August	423.4	783.0	66.9	7.9	57.5	421.7	776.3	67.0	7.9	57.1	1 478.2
September	425.6	785.8	65.3	7.7	57.5	423.3	781.4	66.0	7.8	57.2	1 481.3
October	427.6	788.7	64.2	7.5	57.5	425.0	786.3	64.7	7.6	57.3	1 484.3
November	422.4	784.6	63.1	7.4	57.0	426.8	791.1	63.6	7.4	57.5	1 487.3
December	423.8	790.5	62.8	7.4	57.3	428.7	795.6	62.7	7.3	57.6	1 490.3
2003											
January	438.0	809.5	62.4	7.2	58.3	430.5	800.0	62.2	7.2	57.8	1 494.9
PERSONS											
2001											
November	1 225.2	1 714.0	148.5	8.0	64.7	1 229.1	1 718.9	150.8	8.1	65.0	2 876.9
December	1 230.1	1 724.5	151.1	8.1	65.1	1 233.8	1 723.9	150.6	8.0	65.1	2 881.2
2002											
January	1 231.7	1 723.1	152.5	8.1	65.0	1 238.6	1 729.4	149.7	8.0	65.1	2 885.5
February	1 249.6	1 742.2	150.6	8.0	65.5	1 243.3	1 734.7	148.1	7.9	65.2	2 889.8
March	1 256.0	1 748.9	143.5	7.6	65.4	1 247.1	1 738.8	146.0	7.7	65.1	2 894.0
April	1 243.5	1 731.2	141.7	7.6	64.6	1 249.2	1 741.8	143.6	7.6	65.0	2 899.4
May	1 254.4	1 745.7	140.7	7.5	64.9	1 249.7	1 744.7	141.2	7.5	64.9	2 904.8
June	1 245.2	1 749.9	142.2	7.5	65.0	1 249.7	1 748.1	139.0	7.4	64.8	2 910.2
July	1 243.8	1 743.2	134.9	7.2	64.4	1 249.4	1 752.1	137.2	7.3	64.8	2 916.2
August	1 255.2	1 765.4	137.3	7.2	65.1	1 250.0	1 757.4	135.8	7.2	64.8	2 922.1
September	1 253.5	1 766.0	133.1	7.0	64.9	1 252.1	1 764.0	134.6	7.1	64.8	2 928.0
October	1 257.5	1 768.9	133.9	7.0	64.9	1 255.4	1 771.2	133.8	7.0	64.9	2 933.5
November	1 252.7	1 774.2	131.6	6.9	64.8	1 259.6	1 778.8	133.3	7.0	65.0	2 939.0
December	1 252.1	1 779.9	135.1	7.1	65.0	1 264.6	1 786.6	133.1	6.9	65.2	2 944.5
2003											
January	1 290.3	1 810.4	133.5	6.9	65.8	1 269.6	1 794.1	133.3	6.9	65.4	2 953.1

(a) Trend estimates for July 2002 to December 2002 have been revised.

LABOUR FORCE STATUS (AGED 15 AND OVER)—South Australia(a)

SEASONALLY ADJUSTED.....

TREND.....

Month	SEASONALLY ADJUSTED.....					TREND.....					Civilian population aged 15 and over '000
	Employed full time '000	Total employed '000	Total unemployed '000	Unemp-loyment rate %	Partic-ipation rate %	Employed full time '000	Total employed '000	Total unemployed '000	Unemp-loyment rate %	Partic-ipation rate %	
MALES											
2001											
November	318.8	376.4	32.1	7.9	68.7	318.5	376.6	32.0	7.8	68.7	594.8
December	317.6	377.3	31.7	7.8	68.7	319.2	378.4	31.6	7.7	68.9	595.1
2002											
January	323.0	380.6	31.2	7.6	69.2	319.8	380.1	31.3	7.6	69.1	595.5
February	317.3	381.2	32.5	7.8	69.4	320.3	381.6	31.0	7.5	69.3	595.9
March	321.1	384.2	28.7	7.0	69.3	320.8	382.4	30.8	7.4	69.3	596.2
April	322.0	383.3	30.5	7.4	69.4	321.4	382.6	30.6	7.4	69.2	596.6
May	324.5	383.2	30.0	7.3	69.2	322.0	382.4	30.3	7.4	69.1	597.0
June	319.2	380.0	32.1	7.8	69.0	322.6	382.3	30.0	7.3	69.0	597.4
July	323.3	382.0	28.3	6.9	68.6	323.1	382.5	29.3	7.1	68.9	597.9
August	325.4	380.3	29.4	7.2	68.5	323.8	383.3	28.5	6.9	68.8	598.4
September	326.4	389.9	26.6	6.4	69.5	324.9	384.6	27.5	6.7	68.8	598.9
October	323.1	384.8	26.4	6.4	68.6	326.7	385.9	26.8	6.5	68.8	599.3
November	326.5	385.2	26.7	6.5	68.7	328.8	387.0	26.3	6.4	68.9	599.8
December	333.0	389.3	24.0	5.8	68.9	331.1	388.0	26.1	6.3	69.0	600.2
2003											
January	336.9	388.7	28.5	6.8	69.4	333.1	388.7	26.2	6.3	69.1	600.9
FEMALES											
2001											
November	159.3	307.9	18.4	5.6	52.6	155.1	304.2	20.1	6.2	52.3	619.9
December	154.7	303.8	20.4	6.3	52.3	154.2	304.7	20.1	6.2	52.4	620.1
2002											
January	151.8	304.9	21.1	6.5	52.5	152.9	305.5	20.1	6.2	52.5	620.5
February	151.0	305.7	20.6	6.3	52.6	151.6	306.7	20.0	6.1	52.6	620.9
March	148.3	305.0	19.8	6.1	52.3	150.7	308.1	19.8	6.0	52.8	621.3
April	150.4	311.8	18.8	5.7	53.2	150.2	309.4	19.5	5.9	52.9	621.7
May	153.3	312.1	18.9	5.7	53.2	150.3	310.3	19.4	5.9	53.0	622.1
June	150.3	314.1	19.5	5.9	53.6	150.6	310.6	19.6	5.9	53.0	622.5
July	149.7	306.4	19.8	6.1	52.4	151.0	310.2	20.0	6.1	53.0	623.0
August	151.4	308.7	20.4	6.2	52.8	151.5	309.6	20.3	6.1	52.9	623.5
September	152.7	309.2	21.4	6.5	53.0	152.6	309.5	20.2	6.1	52.8	624.0
October	154.9	310.9	20.4	6.1	53.1	154.2	310.2	19.7	6.0	52.8	624.4
November	153.6	310.7	18.5	5.6	52.7	156.2	311.5	19.1	5.8	52.9	624.8
December	158.5	310.7	17.8	5.4	52.6	158.3	312.9	18.5	5.6	53.0	625.2
2003											
January	163.6	318.8	17.5	5.2	53.7	160.2	314.6	17.8	5.4	53.2	625.8
PERSONS											
2001											
November	478.2	684.3	50.5	6.9	60.5	473.7	680.8	52.1	7.1	60.3	1 214.7
December	472.3	681.1	52.1	7.1	60.3	473.4	683.0	51.7	7.0	60.5	1 215.2
2002											
January	474.8	685.5	52.4	7.1	60.7	472.7	685.6	51.4	7.0	60.6	1 216.0
February	468.3	687.0	53.1	7.2	60.8	471.9	688.3	51.0	6.9	60.8	1 216.7
March	469.4	689.2	48.5	6.6	60.6	471.5	690.5	50.5	6.8	60.9	1 217.5
April	472.5	695.1	49.3	6.6	61.1	471.6	692.0	50.1	6.7	60.9	1 218.3
May	477.8	695.3	48.9	6.6	61.0	472.3	692.7	49.7	6.7	60.9	1 219.1
June	469.5	694.1	51.6	6.9	61.1	473.3	692.9	49.6	6.7	60.9	1 219.9
July	473.0	688.5	48.0	6.5	60.3	474.0	692.7	49.3	6.6	60.8	1 220.9
August	476.8	688.9	49.9	6.7	60.5	475.3	692.9	48.7	6.6	60.7	1 221.9
September	479.2	699.1	48.0	6.4	61.1	477.5	694.1	47.7	6.4	60.7	1 222.9
October	478.0	695.7	46.7	6.3	60.7	480.9	696.1	46.5	6.3	60.7	1 223.7
November	480.1	695.8	45.2	6.1	60.5	485.0	698.5	45.4	6.1	60.7	1 224.6
December	491.5	700.1	41.8	5.6	60.5	489.4	700.9	44.5	6.0	60.8	1 225.4
2003											
January	500.4	707.5	45.9	6.1	61.4	493.3	703.4	44.0	5.9	61.0	1 226.7

(a) Trend estimates for July 2002 to December 2002 have been revised.

LABOUR FORCE STATUS (AGED 15 AND OVER)—Western Australia(a)

Month	SEASONALLY ADJUSTED.....					TREND.....					Civilian population aged 15 and over '000
	Employed full time '000	Total employed '000	Total unemployed '000	Unemp-loyment rate %	Partic-ipation rate %	Employed full time '000	Total employed '000	Total unemployed '000	Unemp-loyment rate %	Partic-ipation rate %	
MALES											
2001											
November	464.3	536.5	38.2	6.6	75.6	458.2	532.5	39.4	6.9	75.3	760.0
December	457.2	533.7	38.6	6.7	75.2	459.2	533.7	38.7	6.8	75.2	761.1
2002											
January	460.9	533.1	39.9	7.0	75.2	459.9	534.8	38.4	6.7	75.2	761.9
February	461.3	537.5	38.7	6.7	75.5	460.1	535.8	38.5	6.7	75.3	762.8
March	455.3	535.0	34.4	6.0	74.6	459.8	536.8	38.6	6.7	75.3	763.7
April	458.3	536.6	41.7	7.2	75.6	458.7	537.9	38.9	6.7	75.4	764.9
May	462.8	537.9	42.8	7.4	75.8	457.4	538.9	39.3	6.8	75.5	766.1
June	459.1	547.1	34.7	6.0	75.8	455.8	539.8	39.6	6.8	75.5	767.3
July	448.9	536.3	39.6	6.9	74.9	454.2	540.2	39.8	6.9	75.5	768.5
August	449.8	539.9	41.7	7.2	75.6	453.4	540.5	39.6	6.8	75.4	769.6
September	455.0	540.0	41.5	7.1	75.4	453.8	541.1	39.2	6.8	75.3	770.8
October	458.1	542.7	35.8	6.2	74.9	455.5	541.9	38.8	6.7	75.2	771.8
November	453.5	543.2	39.0	6.7	75.3	457.9	543.1	38.4	6.6	75.3	772.7
December	462.0	543.8	37.2	6.4	75.1	460.5	544.4	38.0	6.5	75.3	773.6
2003											
January	466.5	547.7	38.1	6.5	75.6	463.2	546.0	37.4	6.4	75.3	774.9
FEMALES											
2001											
November	206.7	412.7	26.0	5.9	57.7	206.2	411.2	27.3	6.2	57.7	760.5
December	203.7	409.4	25.6	5.9	57.1	205.3	411.9	27.0	6.2	57.6	761.6
2002											
January	203.6	407.4	30.6	7.0	57.5	205.4	412.8	26.4	6.0	57.6	762.5
February	207.4	417.7	25.6	5.8	58.1	206.5	414.1	25.3	5.8	57.6	763.4
March	205.6	420.0	21.8	4.9	57.8	208.1	415.2	24.2	5.5	57.5	764.2
April	213.7	416.0	22.4	5.1	57.3	209.7	416.0	23.2	5.3	57.4	765.5
May	213.2	412.7	23.5	5.4	56.9	210.8	416.8	22.7	5.2	57.3	766.9
June	209.6	417.2	23.3	5.3	57.3	211.4	417.4	22.6	5.1	57.3	768.2
July	207.3	419.0	20.9	4.7	57.2	211.3	418.0	22.9	5.2	57.3	769.3
August	214.1	417.4	25.5	5.8	57.5	211.1	419.1	23.4	5.3	57.4	770.5
September	214.7	426.8	22.8	5.1	58.3	211.1	420.8	23.9	5.4	57.6	771.7
October	208.4	420.2	26.0	5.8	57.8	211.8	422.7	24.5	5.5	57.9	772.7
November	209.0	418.8	21.5	4.9	56.9	212.7	425.0	25.0	5.6	58.2	773.6
December	215.1	428.0	29.3	6.4	59.0	213.9	427.5	25.5	5.6	58.5	774.6
2003											
January	218.7	436.7	24.5	5.3	59.4	215.1	429.9	25.9	5.7	58.8	775.9
PERSONS											
2001											
November	671.0	949.2	64.2	6.3	66.7	664.3	943.7	66.7	6.6	66.5	1 520.5
December	660.8	943.1	64.2	6.4	66.2	664.5	945.5	65.6	6.5	66.4	1 522.7
2002											
January	664.5	940.5	70.6	7.0	66.3	665.3	947.6	64.8	6.4	66.4	1 524.4
February	668.7	955.2	64.3	6.3	66.8	666.7	949.9	63.8	6.3	66.4	1 526.2
March	660.9	955.0	56.2	5.6	66.2	667.9	952.0	62.8	6.2	66.4	1 527.9
April	671.9	952.7	64.2	6.3	66.4	668.4	953.9	62.2	6.1	66.4	1 530.4
May	676.0	950.6	66.3	6.5	66.3	668.2	955.7	62.0	6.1	66.4	1 532.9
June	668.8	964.2	58.0	5.7	66.6	667.2	957.2	62.2	6.1	66.4	1 535.4
July	656.2	955.3	60.5	6.0	66.1	665.5	958.2	62.6	6.1	66.4	1 537.8
August	663.9	957.2	67.2	6.6	66.5	664.5	959.6	63.1	6.2	66.4	1 540.1
September	669.7	966.8	64.3	6.2	66.8	665.0	961.8	63.1	6.2	66.5	1 542.5
October	666.4	962.9	61.8	6.0	66.3	667.3	964.7	63.3	6.2	66.6	1 544.4
November	662.5	962.1	60.4	5.9	66.1	670.6	968.1	63.4	6.1	66.7	1 546.3
December	677.1	971.8	66.5	6.4	67.1	674.3	971.8	63.5	6.1	66.9	1 548.3
2003											
January	685.2	984.5	62.6	6.0	67.5	678.3	976.0	63.3	6.1	67.1	1 550.8

(a) Trend estimates for July 2002 to December 2002 have been revised.

LABOUR FORCE STATUS (AGED 15 AND OVER)—Tasmania(a)

SEASONALLY ADJUSTED.....

TREND.....

Month	SEASONALLY ADJUSTED.....					TREND.....					Civilian population aged 15 and over '000
	Employed full time '000	Total employed '000	Total unemployed '000	Unemployment rate %	Participation rate %	Employed full time '000	Total employed '000	Total unemployed '000	Unemployment rate %	Participation rate %	
MALES											
2001											
November	93.9	110.6	12.7	10.3	68.0	93.9	110.1	12.2	10.0	67.5	181.2
December	94.0	109.7	11.5	9.5	66.9	93.9	110.3	11.8	9.7	67.4	181.2
2002											
January	93.8	110.8	11.4	9.3	67.4	93.8	110.2	11.4	9.4	67.1	181.2
February	94.0	110.6	10.5	8.6	66.8	93.5	109.6	11.2	9.3	66.7	181.3
March	93.7	108.7	11.6	9.6	66.4	93.1	108.9	11.2	9.3	66.3	181.3
April	92.0	107.7	11.0	9.3	65.5	92.7	108.3	11.3	9.5	66.0	181.4
May	91.5	106.9	12.0	10.1	65.5	92.5	108.0	11.4	9.6	65.8	181.5
June	93.6	109.2	11.4	9.5	66.4	92.6	108.0	11.4	9.6	65.8	181.6
July	91.6	107.2	11.6	9.8	65.4	92.8	108.4	11.2	9.4	65.9	181.7
August	94.2	109.5	10.4	8.7	66.0	93.3	109.0	11.0	9.2	66.1	181.8
September	94.7	110.5	11.5	9.4	67.1	93.8	109.7	10.9	9.1	66.3	181.8
October	92.8	109.0	10.5	8.8	65.7	94.3	110.2	11.0	9.1	66.6	181.9
November	95.3	112.1	10.1	8.2	67.1	94.8	110.7	11.1	9.1	66.9	182.0
December	94.8	110.5	12.6	10.3	67.6	95.3	111.0	11.4	9.3	67.2	182.1
2003											
January	96.7	111.1	11.8	9.6	67.4	95.8	111.3	11.6	9.4	67.5	182.3
FEMALES											
2001											
November	44.9	90.3	6.6	6.8	50.5	45.2	89.4	7.2	7.5	50.4	191.8
December	44.6	88.8	7.0	7.3	50.0	44.9	89.0	7.2	7.5	50.2	191.8
2002											
January	44.5	87.6	8.2	8.5	49.9	44.3	88.7	7.2	7.5	49.9	191.9
February	43.0	88.3	8.4	8.6	50.3	43.6	88.5	7.1	7.4	49.8	192.0
March	44.4	88.9	5.9	6.2	49.4	43.0	88.8	6.9	7.2	49.8	192.1
April	41.6	88.7	6.1	6.4	49.3	42.4	89.2	6.8	7.1	50.0	192.2
May	42.2	90.2	6.3	6.5	50.2	42.0	89.7	6.9	7.2	50.2	192.3
June	41.2	90.6	7.3	7.5	50.9	42.0	89.8	7.2	7.4	50.4	192.4
July	41.7	89.5	9.0	9.1	51.1	42.3	89.7	7.5	7.7	50.5	192.5
August	43.0	90.4	7.3	7.5	50.7	43.0	89.4	7.7	8.0	50.4	192.6
September	45.1	87.6	8.1	8.4	49.6	43.7	89.2	7.8	8.0	50.3	192.7
October	44.5	89.6	7.3	7.5	50.2	44.3	89.2	7.7	7.9	50.2	192.8
November	43.1	88.0	7.0	7.4	49.2	44.7	89.5	7.6	7.8	50.3	193.0
December	46.6	91.0	8.5	8.5	51.5	45.0	89.8	7.5	7.8	50.4	193.1
2003											
January	44.2	91.1	7.3	7.4	50.9	45.1	90.3	7.5	7.7	50.6	193.3
PERSONS											
2001											
November	138.8	200.9	19.3	8.8	59.0	139.1	199.5	19.5	8.9	58.7	373.0
December	138.6	198.5	18.6	8.6	58.2	138.7	199.3	19.0	8.7	58.5	373.0
2002											
January	138.4	198.4	19.6	9.0	58.4	138.1	198.8	18.6	8.6	58.3	373.2
February	137.0	198.9	18.8	8.6	58.3	137.1	198.2	18.3	8.5	58.0	373.3
March	138.1	197.7	17.5	8.1	57.6	136.0	197.7	18.1	8.4	57.8	373.4
April	133.6	196.4	17.1	8.0	57.2	135.1	197.6	18.1	8.4	57.7	373.6
May	133.7	197.0	18.3	8.5	57.6	134.5	197.6	18.4	8.5	57.8	373.8
June	134.8	199.8	18.7	8.6	58.4	134.6	197.8	18.6	8.6	57.9	374.0
July	133.3	196.7	20.6	9.5	58.1	135.2	198.1	18.8	8.6	58.0	374.2
August	137.1	200.0	17.8	8.2	58.2	136.2	198.5	18.8	8.7	58.0	374.4
September	139.8	198.0	19.5	9.0	58.1	137.5	198.9	18.7	8.6	58.1	374.6
October	137.3	198.6	17.7	8.2	57.7	138.5	199.5	18.7	8.6	58.2	374.8
November	138.4	200.1	17.1	7.9	57.9	139.5	200.1	18.7	8.6	58.4	374.9
December	141.4	201.5	21.1	9.5	59.3	140.2	200.8	18.9	8.6	58.6	375.1
2003											
January	140.9	202.2	19.1	8.6	58.9	140.9	201.6	19.1	8.6	58.8	375.6

(a) Trend estimates for July 2002 to December 2002 have been revised.

LABOUR FORCE STATUS (AGED 15 AND OVER)—Northern Territory(a)

TREND.....

Month	Employed full time '000	Total employed '000	Total unemployed '000	Unemp- loyment rate %	Partic- ipation rate %	Civilian population aged 15 and over '000
MALES						
2001						
November	44.0	54.2	4.6	7.9	79.4	74.1
December	43.8	54.2	4.7	8.0	79.5	74.2
2002						
January	43.7	54.5	4.7	7.9	79.9	74.1
February	43.8	55.0	4.6	7.7	80.3	74.1
March	44.2	55.5	4.3	7.2	80.7	74.1
April	44.8	56.0	3.9	6.5	80.9	74.1
May	45.3	56.3	3.5	5.8	80.7	74.0
June	45.5	56.2	3.1	5.2	80.1	74.0
July	45.4	55.8	2.9	4.9	79.4	74.0
August	45.2	55.3	2.9	4.9	78.6	73.9
September	45.0	54.8	3.0	5.2	78.2	73.9
October	44.9	54.4	3.2	5.6	78.0	73.9
November	44.9	54.2	3.4	5.8	77.9	73.8
December	45.0	54.1	3.4	5.9	78.0	73.8
2003						
January	45.1	54.1	3.5	6.0	78.0	73.7
FEMALES						
2001						
November	28.0	42.8	3.8	8.1	68.0	68.5
December	28.1	43.3	3.6	7.7	68.4	68.6
2002						
January	28.2	43.9	3.2	6.9	68.7	68.6
February	28.4	44.5	2.8	5.9	68.8	68.7
March	28.6	44.8	2.4	5.0	68.7	68.7
April	28.9	44.9	2.0	4.3	68.4	68.7
May	29.1	44.8	1.9	4.1	67.9	68.7
June	29.4	44.5	1.8	4.0	67.4	68.7
July	29.6	44.2	1.8	4.0	67.1	68.6
August	29.8	44.0	1.9	4.1	66.9	68.5
September	29.8	43.9	2.0	4.3	67.0	68.5
October	29.9	44.0	2.1	4.5	67.3	68.4
November	30.0	44.0	2.2	4.8	67.7	68.4
December	30.2	44.1	2.4	5.2	68.1	68.4
2003						
January	30.4	44.1	2.7	5.7	68.5	68.3
PERSONS						
2001						
November	72.1	97.0	8.4	8.0	73.9	142.6
December	71.9	97.5	8.3	7.8	74.1	142.7
2002						
January	71.9	98.4	7.9	7.5	74.5	142.8
February	72.2	99.4	7.4	6.9	74.8	142.8
March	72.9	100.3	6.7	6.2	74.9	142.8
April	73.7	101.0	5.9	5.5	74.9	142.8
May	74.4	101.0	5.3	5.0	74.5	142.7
June	74.8	100.7	4.9	4.7	74.0	142.6
July	75.0	100.0	4.7	4.5	73.5	142.6
August	75.0	99.3	4.8	4.6	73.0	142.5
September	74.8	98.7	5.0	4.8	72.8	142.4
October	74.8	98.4	5.3	5.1	72.8	142.3
November	75.0	98.2	5.6	5.4	73.0	142.2
December	75.2	98.2	5.9	5.6	73.2	142.1
2003						
January	75.4	98.2	6.1	5.9	73.4	142.0

(a) Trend estimates for July 2002 to December 2002 have been revised. Estimates for the most recent three months may be subject to significant revisions as data for later months become available.

LABOUR FORCE STATUS (AGED 15 AND OVER)—Australian Capital Territory(a)

TREND.....

Month	Employed full time	Total employed	Total unemployed	Unemp- loyment rate	Partic- ipation rate	Civilian population aged 15 and over
	'000	'000	'000	%	%	'000
MALES						
2001						
November	73.1	88.0	4.8	5.1	77.3	120.1
December	73.2	88.0	4.7	5.1	77.1	120.2
2002						
January	73.4	87.8	4.7	5.1	76.9	120.4
February	73.8	87.7	4.8	5.1	76.7	120.5
March	74.2	87.6	4.7	5.1	76.5	120.6
April	74.8	87.9	4.6	5.0	76.6	120.8
May	75.3	88.4	4.5	4.9	76.9	120.9
June	75.9	89.1	4.5	4.8	77.3	121.0
July	76.5	89.8	4.5	4.7	77.8	121.1
August	77.1	90.3	4.5	4.7	78.3	121.1
September	77.6	90.7	4.5	4.7	78.5	121.2
October	78.0	91.0	4.5	4.8	78.7	121.5
November	78.3	91.3	4.6	4.7	78.8	121.7
December	78.5	91.5	4.5	4.7	78.9	121.9
2003						
January	78.5	91.7	4.5	4.7	78.9	122.0
FEMALES						
2001						
November	51.1	79.5	2.8	3.4	65.6	125.5
December	51.1	79.7	2.8	3.4	65.6	125.6
2002						
January	50.8	80.0	2.8	3.4	65.9	125.7
February	50.5	80.4	2.9	3.5	66.2	125.9
March	50.4	80.9	3.1	3.6	66.6	126.0
April	50.5	81.4	3.2	3.8	67.1	126.1
May	50.9	81.9	3.4	4.0	67.6	126.2
June	51.4	82.3	3.5	4.1	67.9	126.4
July	52.0	82.7	3.5	4.1	68.1	126.5
August	52.6	82.9	3.4	3.9	68.2	126.7
September	53.3	83.2	3.2	3.7	68.1	126.8
October	53.9	83.3	3.0	3.4	68.0	127.0
November	54.5	83.5	2.8	3.2	67.9	127.1
December	54.8	83.6	2.6	3.0	67.8	127.3
2003						
January	55.0	83.7	2.5	2.9	67.7	127.4
PERSONS						
2001						
November	124.2	167.5	7.6	4.3	71.3	245.6
December	124.3	167.7	7.5	4.3	71.3	245.9
2002						
January	124.3	167.8	7.5	4.3	71.3	246.1
February	124.3	168.0	7.7	4.4	71.3	246.4
March	124.6	168.5	7.8	4.4	71.5	246.6
April	125.3	169.2	7.9	4.4	71.7	246.9
May	126.2	170.3	7.9	4.4	72.1	247.1
June	127.3	171.4	8.0	4.4	72.5	247.4
July	128.5	172.5	8.0	4.4	72.9	247.6
August	129.7	173.3	7.9	4.3	73.1	247.8
September	130.9	173.9	7.7	4.2	73.2	248.1
October	132.0	174.4	7.5	4.1	73.2	248.5
November	132.8	174.8	7.3	4.0	73.2	248.8
December	133.3	175.1	7.1	3.9	73.2	249.2
2003						
January	133.5	175.3	7.1	3.9	73.2	249.3

(a) Trend estimates for July 2002 to December 2002 have been revised. Estimates for the most recent three months may be subject to significant revisions as data for later months become available.

EXPLANATORY NOTES

INTRODUCTION

1 This publication contains preliminary estimates of the civilian labour force derived from the Labour Force Survey component of the monthly population survey. Estimates for the current month are preliminary and subject to revision. Revised estimates for the current month and more detailed estimates will be published in *Labour Force, Australia* (cat. no. 6203.0).

CONCEPTS, SOURCES AND METHODS

2 The conceptual framework used in Australia's Labour Force Survey aligns closely with the standards and guidelines set out in Resolutions of the International Conference of Labour Statisticians. Descriptions of the underlying concepts and structure of Australia's labour force statistics, and the sources and methods used in compiling the estimates, are presented in *Labour Statistics: Concepts, Sources and Methods* (cat. no. 6102.0) which is also available on the ABS website <<http://www.abs.gov.au>> (About Statistics—Concepts and Classifications).

MONTHLY POPULATION SURVEY

3 The population survey is based on a multi-stage area sample of private dwellings (currently about 30,000 houses, flats, etc.) and a list sample of non-private dwellings (hotels, motels, etc.), and covers about 0.45% of the population of Australia. The information is obtained from the occupants of selected dwellings by specially trained interviewers. The information obtained relates to the week before the interview (i.e. the reference week).

4 Households selected for the Labour Force Survey are interviewed each month for 8 months, with one eighth of the sample being replaced each month. The first interview is conducted face-to-face. Subsequent interviews are conducted by telephone (if acceptable to the respondent).

5 The interviews are generally conducted during the two weeks beginning on the Monday between the 6th and 12th of each month. Each year, to deal with operational difficulties involved with collecting and processing the Labour Force Survey around the Christmas and New Year holiday period, interviews for December start four weeks after November interviews start, and January interviews start five weeks after December interviews start. As a result, January interviewing may commence as early as the 8th or as late as the 14th, depending on the year. Occasionally, circumstances that present significant operational difficulties for survey collection can result in a change to the normal pattern for the start of interviewing.

6 Estimates from the Labour Force Survey are published first in this publication 31 days after the commencement of interviews for that month, with the exception of estimates for each December which are published 38 days after the commencement of interviews.

SCOPE OF SURVEY

7 The Labour Force Survey includes all persons aged 15 and over except members of the permanent defence forces, certain diplomatic personnel of overseas governments customarily excluded from census and estimated population counts, overseas residents in Australia, and members of non-Australian defence forces (and their dependants) stationed in Australia.

COVERAGE

8 In the Labour Force Survey, coverage rules are applied which aim to ensure that each person is associated with only one dwelling, and hence has only one chance of selection. The coverage rules are necessarily a balance between theoretical and operational considerations. Nevertheless, the chance of a person being enumerated at two separate dwellings in the survey is considered to be negligible.

EXPLANATORY NOTES

POPULATION BENCHMARKS

9 Labour Force Survey estimates are calculated in such a way as to add up to independent estimates of the civilian population aged 15 and over (population benchmarks). From February 1999, labour force estimates have been compiled using benchmarks based on the results of the 1996 Census of Population and Housing. Small revisions were made to many of the historical estimates from January 1995 to January 1999. The ABS expects to introduce new benchmarks, based on the 2001 Census, in February 2004.

COMPARABILITY OF SERIES

10 From April 1986, the definition of employed persons was changed to include persons who worked without pay between 1 and 14 hours per week in a family business or on a farm (i.e. contributing family workers). For further information, see paragraphs 36 and 37 of the Explanatory Notes to the February 1987 issue of *Labour Force, Australia* (cat. no. 6203.0).

11 The ABS introduced telephone interviewing into the Labour Force Survey in August 1996. Implementation was phased in for each new sample group from August 1996 to February 1997. During the period of implementation, the new method produced different estimates than would have been obtained under the old methodology. The effect dissipated over the final months of implementation and was no longer discernible from February 1997. The estimates for February 1997 and onwards are directly comparable to estimates for periods prior to August 1996. For further details, see the feature article in the June 1997 issue of *Labour Force, Australia* (cat. no. 6203.0).

12 From April 2001 the Labour Force Survey has been conducted using a redesigned questionnaire containing additional data items and some minor definitional changes. Core labour force series were revised for the period April 1986 to March 2001 to ensure continuity. For further details, see *Information Paper: Implementing the Redesigned Labour Force Survey Questionnaire* (cat. no. 6295.0) and *Information Paper: Questionnaires Used in the Labour Force Survey* (cat. no. 6232.0).

SURVEY SAMPLE REDESIGN

13 The Labour Force Survey sample was last reselected using information collected in the 2001 Census of Population and Housing.

14 The bulk of the new sample is being phased in over the period November 2002 to June 2003, with one eighth of this portion of the sample being introduced every month. The remainder of the sample (about 18% of the total), which covers less settled areas of Australia and non-private dwellings, was rotated in full for New South Wales, Victoria, Tasmania, Northern Territory and Australian Capital Territory in November 2002, and for Queensland, South Australia and Western Australia in December 2002. Such a pattern of implementation means that any changes to labour force estimates due to differences between the two samples, or any other influences, will be spread over the eight months.

15 For further details, see *Information Paper: Labour Force Survey Sample Design* (cat. no. 6269.0).

EXPLANATORY NOTES

RELIABILITY OF ESTIMATES

16 Two types of error are possible in an estimate based on a sample survey: sampling error and non-sampling error.

Sampling error occurs because a sample, rather than the entire population, is surveyed. One measure of the likely difference resulting from not including all dwellings in the survey is given by the standard error. There are about two chances in three that a sample estimate will differ by less than one standard error from the figure that would have been obtained if all dwellings had been included in the survey, and about nineteen chances in twenty that the difference will be less than two standard errors. Standard errors of estimates for the latest month and of estimates of movements since the previous month are shown on pages 31 and 32. Standard errors of other estimates and other movements may be determined by using information in the Technical Notes in *Labour Force, Australia* (cat. no. 6203.0).

Non sampling error arises from inaccuracies in collecting, recording and processing the data. Every effort is made to minimise reporting error by the careful design of questionnaires, intensive training and supervision of interviewers, and efficient data processing procedures.

SEASONAL ADJUSTMENT AND TREND ESTIMATION

17 Seasonally adjusted series are published in Tables 2, 5 and 12 to 17. Seasonal factors are reviewed annually to take account of each additional year's original data. The results of the latest review were used to compile the seasonally adjusted and trend estimates given in this publication. Information about the last annual review of seasonal factors was published in a feature article in the February 2002 issue of *Labour Force, Australia* (cat. no. 6203.0).

18 Seasonal adjustment is a means of removing the estimated effects of normal seasonal variation from the series so that the effects of other influences on the series can be more clearly recognised. Seasonal adjustment does not aim to remove the irregular or non-seasonal influences which may be present in any particular month. This means that month-to-month movements of the seasonally adjusted estimates may not be reliable indicators of trend behaviour. For example, irregular factors unrelated to the trend account for more than half the seasonally adjusted movement with the following frequency:

Employment: 6 in 10 monthly movements

Unemployment: 8 in 10 monthly movements

Unemployment rate: 8 in 10 monthly movements

Participation rate: 9 in 10 monthly movements.

19 The smoothing of seasonally adjusted series reduces the impact of the irregular component of the seasonally adjusted series, and creates trend estimates. These trend estimates are derived by applying a 13-term Henderson-weighted moving average to all months except the last six. The last six monthly trend estimates are obtained by applying surrogates of the Henderson average to the seasonally adjusted series. Trend series are used to analyse the underlying behaviour of the series over time. These are published in tables 3, 6 and 12 to 19.

20 While this smoothing technique enables estimates to be produced for the latest month, it does result in revisions to the most recent months as additional observations become available. Generally, subsequent revisions become smaller, and after three months have a negligible impact on the series. There will also be revisions as a result of the annual review of seasonal factors.

EXPLANATORY NOTES

SEASONAL ADJUSTMENT AND TREND ESTIMATION *continued*

21 Trend estimates are published for the Northern Territory in table 18 and for the Australian Capital Territory in table 19. Unadjusted series for the two Territories have shown, historically, a high degree of variability, which can lead to considerable revisions to the seasonally adjusted estimates after each annual seasonal factor re-analysis. Seasonally adjusted estimates are not currently published for the two Territories. The most recent six months trend estimates are subject to revision. For the three most recent months, the revision may be relatively large. Inferences about trends drawn from smoothed seasonally adjusted (trend) estimates for months earlier than the latest three months are unlikely to be affected by month to month revisions. They may be affected by revision resulting from the annual re-analysis of seasonal factors.

22 For further information, see *A Guide to Interpreting Time Series—Monitoring 'Trends': an Overview* (cat. no. 1348.0) or contact the Assistant Director, Time Series Analysis on (02) 6252 6345.

RELATED PUBLICATIONS

23 Users may also wish to refer to *Labour Force, Australia* (cat. no. 6203.0). This publication contains a detailed list of related publications which are available from ABS Bookshops.

24 ABS Information about the labour market can be found on the Labour theme page on the ABS web site <<http://www.abs.gov.au>> (Themes—People, Labour).

25 Current publications and other products released by the ABS are listed in the *Catalogue of Publications and Products* (cat. no. 1101.0). The Catalogue is available from any ABS office or the ABS web site <<http://www.abs.gov.au>> (Products and Services). The ABS also issues a daily Release Advice on the web site (Information on Releases) which details products to be released in the week ahead.

DATA AVAILABLE ON REQUEST

26 As well as the statistics included in this and related publications, the ABS may have other relevant data available. Inquiries should be made to Marjory Smith on 02 6252 6525 or to any ABS office.

EFFECTS OF ROUNDING

27 Estimates have been rounded and discrepancies may occur between sums of the component items and totals.

28 Estimates of movement shown in this publication are obtained by taking the difference of unrounded estimates. The movement estimate is then rounded to one decimal place. Therefore where a discrepancy occurs between the reported movement and the difference of the rounded estimates, the reported movement will be more accurate.

SYMBOLS AND OTHER USAGES

* subject to sampling variability too high for most practical uses. See the Technical Notes in cat. no. 6203.0 for more details.

.. not applicable

r revised

pts percentage points

GLOSSARY

Actively looking for work	Includes writing, telephoning or applying in person to an employer for work; answering an advertisement for a job; checking factory noticeboards or the touchscreens at the Centrelink offices; being registered with Centrelink as a jobseeker; checking or registering with any other employment agency; advertising or tendering for work; and contacting friends or relatives.
Attending school	Persons aged 15 to 19 years enrolled at secondary or high school in the reference week.
Attending tertiary educational institution full time	Persons aged 15 to 24 years enrolled full time at a TAFE college, university, or other educational institution in the reference week, except those persons aged 15 to 19 years who were still attending school.
Civilian population aged 15 years and over	All usual residents of Australia aged 15 years and over except members of the permanent defence forces, certain diplomatic personnel of overseas governments customarily excluded from census and estimated population counts, overseas residents in Australia, and members of non-Australian defence forces (and their dependants) stationed in Australia.
Employed	All persons aged 15 years and over who, during the reference week: <ul style="list-style-type: none">■ worked for one hour or more for pay, profit, commission or payment in kind in a job or business, or on a farm (comprising employees, employers and own account workers); or■ worked for one hour or more without pay in a family business or on a farm (i.e. contributing family workers); or■ were employees who had a job but were not at work and were:<ul style="list-style-type: none">■ away from work for less than four weeks up to the end of the reference week; or■ away from work for more than four weeks up to the end of the reference week and received pay for some or all of the four week period to the end of the reference week; or■ away from work as a standard work or shift arrangement; or■ on strike or locked out; or■ on workers' compensation and expected to return to their job; or■ were employers or own account workers, who had a job, business or farm, but were not at work.
Full-time workers	Employed persons who usually worked 35 hours or more a week (in all jobs) and those who, although usually working less than 35 hours a week, worked 35 hours or more during the reference week.
Labour force	For any group, persons who were employed or unemployed, as defined.
Labour force status	A classification of the civilian population aged 15 years and over into employed, unemployed or not in the labour force, as defined. The definitions conform closely to the international standard definitions adopted by the International Conferences of Labour Statisticians.
Not in the labour force	Persons who were not in the categories employed or unemployed as defined.
Participation rate	For any group, the labour force expressed as a percentage of the civilian population aged 15 years and over in the same group.
Part-time workers	Employed persons who usually worked less than 35 hours a week (in all jobs) and either did so during the reference week, or were not at work in the reference week.

G L O S S A R Y

Seasonally adjusted series	A time series of estimates with the estimated effects of normal seasonal variation removed. See Explanatory Notes 17 and 18 for more detail.
Trend series	A smoothed seasonally adjusted series of estimates. See Explanatory Notes 19 to 21 for more detail.
Unemployed	Persons aged 15 years and over who were not employed during the reference week, and: <ul style="list-style-type: none">■ had actively looked for full-time or part-time work at any time in the four weeks up to the end of the reference week and:<ul style="list-style-type: none">■ were available for work in the reference week; or■ were waiting to start a new job within four weeks from the end of the reference week and could have started in the reference week if the job had been available then.
Unemployed looking for full-time work	Unemployed persons who: <ul style="list-style-type: none">■ actively looked for full-time work and were available for work in the reference week; or■ actively looked for work and were not available for work in the reference week because they were waiting to start a new full-time job.
Unemployed looking for part-time work	Unemployed persons who: <ul style="list-style-type: none">■ actively looked for part-time work only and were available for work in the reference week; or■ actively looked for work and were not available for work in the reference week because they were waiting to start a new part-time job.
Unemployment rate	For any group, the number of unemployed persons expressed as a percentage of the labour force in the same group.
Unemployment to population ratio	For any group, the number of unemployed persons expressed as a percentage of the civilian population in the same group.

STANDARD ERRORS

The estimates in this publication are based on information gained from the occupants of a sample survey of dwellings. Because the entire population is not surveyed, the published estimates are subject to sampling error. The most common way of quantifying such sampling error is to calculate the standard error for the published estimate or statistic.

LEVEL ESTIMATES

To illustrate, let us say the published level estimate for employed persons aged 15 to 19 is 700,000. The calculated standard error in this case is 9,800. The standard error is then used to interpret the level estimate of 700,000. For instance, the standard error of 9,800 indicates that:

- There are approximately two chances in three that the real value falls within the range 690,200 to 709,800 (700,000 + or - 9,800)
- There are approximately nineteen chances in twenty that the real value falls within the range 680,400 to 719,600 (700,000 + or - 19,600).

The real value in this case is the result we would obtain if we could enumerate the total population.

The following tables show the standard errors for this month's level estimates.

	EMPLOYED.....			UNEMPLOYED.....			Labour force	Not in labour force	Unemployment rate	Participation rate
	Full time	Part time	Total	Looking for f/t work	Looking for p/t work	Total				
	'000	'000	'000	'000	'000	'000				
NSW	18.6	10.6	22.6	5.4	3.6	5.9	23.5	16.9	0.2	0.4
Vic.	14.2	8.7	17.0	4.1	2.6	4.5	17.6	12.8	0.2	0.4
Qld	11.0	7.6	12.5	4.1	2.5	4.6	12.8	10.1	0.2	0.4
SA	5.1	3.6	5.8	1.8	1.1	2.0	6.0	5.0	0.3	0.5
WA	5.5	4.1	6.1	2.3	1.4	2.5	6.2	5.0	0.2	0.4
Tas.	1.8	1.3	2.1	0.8	0.5	0.9	2.2	1.9	0.4	0.6
NT	1.3	0.8	1.4	0.5	0.3	0.5	1.4	1.0	0.5	1.0
ACT	1.8	1.1	2.1	0.5	0.4	0.6	2.1	1.4	0.3	0.8
Males	21.6	10.1	23.8	7.3	4.0	7.8	24.9	15.5	0.1	0.3
Females	16.0	14.6	20.7	6.0	4.4	6.9	21.5	19.0	0.2	0.3
Persons	28.8	16.7	38.2	8.7	5.4	9.6	40.7	25.1	0.1	0.3

	NUMBER OF UNEMPLOYED PERSONS.....					UNEMPLOYMENT RATE.....				
	Aged 15-19 looking for f/t work	Aged 20 and over looking for f/t work	Total looking for f/t work	Looking for p/t work	Total	Aged 15-19 looking for f/t work	Aged 20 and over looking for f/t work	Total looking for f/t work	Looking for p/t work	Total
	'000	'000	'000	'000	'000	pts	pts	pts	pts	pts
NSW	3.0	5.1	5.4	3.6	5.9	2.8	0.2	0.2	0.4	0.2
Vic.	2.0	3.9	4.1	2.6	4.5	3.1	0.2	0.2	0.4	0.2
Qld	2.1	3.7	4.1	2.5	4.6	2.6	0.3	0.3	0.5	0.2
SA	0.9	1.7	1.8	1.1	2.0	3.4	0.3	0.3	0.5	0.3
WA	1.2	2.1	2.3	1.4	2.5	3.0	0.3	0.3	0.5	0.2
Tas.	0.4	0.8	0.8	0.5	0.9	4.3	0.5	0.5	0.8	0.4
NT	0.2	0.4	0.5	0.3	0.5	6.5	0.6	0.6	1.5	0.5
ACT	0.3	0.5	0.5	0.4	0.6	6.3	0.4	0.4	0.9	0.3
Males	3.7	6.8	7.3	4.0	7.8	1.8	0.1	0.2	0.5	0.1
Females	3.2	5.6	6.0	4.4	6.9	2.4	0.2	0.2	0.2	0.2
Persons	4.5	8.1	8.7	5.4	9.6	1.3	0.1	0.1	0.2	0.1

STANDARD ERRORS *continued*

MOVEMENT ESTIMATES

The following example illustrates how to use the standard error to interpret a movement estimate. Let us say that one month the published level estimate for females employed part time in Australia is 1,890,000; the next month the published level estimate is 1,900,000. The calculated standard error for the movement estimate is 10,300. The standard error is then used to interpret the published movement estimate of 10,000. For instance, the standard error of 10,300 indicates that:

- There are approximately two chances in three that the real movement over the two month period falls within the range -300 to 20,300 (10,000 + or - 10,300)
- There are approximately nineteen chances in twenty that the real movement falls within the range -10,600 to 30,600 (10,000 + or - 20,600).

The following tables show the standard errors for this month's movement estimates.

	EMPLOYED.....			UNEMPLOYED.....			Labour force	Not in labour force	Unemployment rate	Participation rate
	Full time	Part time	Total	Looking for f/t work	Looking for p/t work	Total				
	'000	'000	'000	'000	'000	'000				
NSW	10.0	7.1	11.1	4.1	2.7	4.4	11.3	9.4	0.1	0.2
Vic.	7.7	5.6	8.6	3.1	2.1	3.3	8.8	7.2	0.1	0.2
Qld	6.8	5.0	7.7	2.9	2.1	3.2	7.9	6.3	0.2	0.3
SA	3.2	2.3	3.6	1.3	0.8	1.4	3.7	3.1	0.2	0.3
WA	3.9	3.0	4.4	1.7	1.2	1.8	4.5	3.5	0.2	0.3
Tas.	1.3	0.9	1.4	0.6	0.4	0.6	1.5	1.3	0.3	0.4
NT	1.1	0.7	1.2	0.4	0.3	0.4	1.2	0.9	0.4	0.9
ACT	1.1	0.7	1.2	0.4	0.3	0.4	1.2	0.9	0.2	0.5
Males	14.2	7.5	15.0	5.5	3.2	5.9	15.3	10.9	0.1	0.2
Females	11.2	10.4	13.9	4.6	3.6	5.2	14.2	12.9	0.1	0.2
Persons	16.4	11.7	18.5	6.5	4.3	7.1	18.9	15.3	0.1	0.1

	NUMBER OF UNEMPLOYED PERSONS.....					UNEMPLOYMENT RATE.....				
	Aged 15-19 looking for f/t work	Aged 20 and over looking for f/t work	Total looking for f/t work	Looking for p/t work	Total	Aged 15-19 looking for f/t work	Aged 20 and over looking for f/t work	Total looking for f/t work	Looking for p/t work	Total
	'000	'000	'000	'000	'000	pts	pts	pts	pts	pts
NSW	2.3	3.8	4.1	2.7	4.4	2.1	0.2	0.2	0.3	0.1
Vic.	1.5	2.9	3.1	2.1	3.3	2.3	0.2	0.2	0.3	0.1
Qld	1.6	2.7	2.9	2.1	3.2	2.1	0.2	0.2	0.4	0.2
SA	0.7	1.2	1.3	0.8	1.4	2.6	0.2	0.2	0.4	0.2
WA	1.0	1.6	1.7	1.2	1.8	2.4	0.2	0.2	0.4	0.2
Tas.	0.3	0.5	0.6	0.4	0.6	3.5	0.4	0.4	0.6	0.3
NT	0.2	0.4	0.4	0.3	0.4	5.8	0.5	0.5	1.2	0.4
ACT	0.2	0.4	0.4	0.3	0.4	5.1	0.3	0.3	0.7	0.2
Males	2.9	5.2	5.5	3.2	5.9	1.4	0.1	0.1	0.4	0.1
Females	2.5	4.3	4.6	3.6	5.2	1.9	0.2	0.2	0.2	0.1
Persons	3.5	6.1	6.5	4.3	7.1	1.0	0.1	0.1	0.2	0.1

WHAT IF...? REVISIONS TO TREND ESTIMATES

EFFECT OF NEW SEASONALLY ADJUSTED ESTIMATES ON TREND ESTIMATES

Each time new seasonally adjusted estimates become available, trend estimates are revised (see paragraphs 19 and 20 of Explanatory Notes).

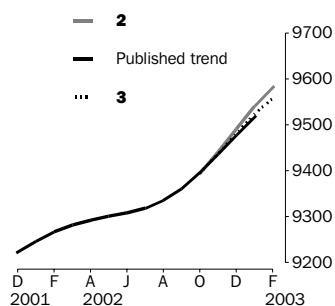
TREND REVISIONS

The examples in the tables below show four illustrative scenarios and the consequent revisions to previous trend estimates of employment and unemployment rate.

- 1** The February seasonally adjusted estimate is the same as the January estimate.
- 2** The February seasonally adjusted estimate is higher than the January estimate by:
 - +0.30% for employment
 - +1.89% for the unemployment rate
- 3** The February seasonally adjusted estimate is lower than the January estimate by:
 - -0.30% for employment
 - -1.89% for the unemployment rate
- 4** The February seasonally adjusted estimate results in a revised January trend estimate which is identical to the new February trend estimate.

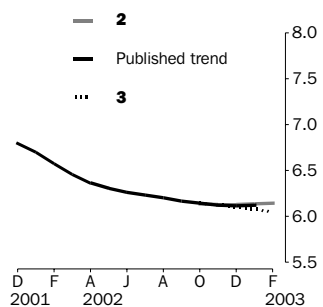
The percentage changes of 0.30% and 1.89% were chosen because they represent the average absolute monthly percentage changes in employment and the unemployment rate respectively.

EMPLOYMENT ('000)



		WHAT IF NEXT MONTH'S SEASONALLY ADJUSTED ESTIMATE IS:			
		1	2	3	4
	TREND AS PUBLISHED	9 586.6 <i>i.e. the same as Jan 2003</i>	9 615.8 <i>i.e. rises by 0.30%</i>	9 557.5 <i>i.e. falls by 0.30%</i>	9 319.5 <i>i.e. same trend for Jan & Feb</i>
2002	November	9 435.6	9 438.5	9 439.8	9 437.2
	December	9 477.3	9 486.1	9 490.4	9 481.8
2003	January	9 517.4	9 532.5	9 540.6	9 524.3
	February (new)	—	9 570.4	9 582.7	9 558.1

UNEMPLOYMENT RATE (%)



		WHAT IF NEXT MONTH'S SEASONALLY ADJUSTED ESTIMATE IS:			
		1	2	3	4
	TREND AS PUBLISHED	6.1 <i>i.e. the same as Jan 2003</i>	6.2 <i>i.e. rises by 1.89%</i>	6.0 <i>i.e. falls by 1.89%</i>	6.2 <i>i.e. same trend for Jan & Feb</i>
2002	November	6.1	6.1	6.1	6.1
	December	6.1	6.1	6.1	6.1
2003	January	6.1	6.1	6.1	6.1
	February (new)	—	6.1	6.1	6.1

FOR MORE INFORMATION...

- INTERNET* **www.abs.gov.au** the ABS web site is the best place to start for access to summary data from our latest publications, information about the ABS, advice about upcoming releases, our catalogue, and Australia Now—a statistical profile.
- LIBRARY* A range of ABS publications is available from public and tertiary libraries Australia-wide. Contact your nearest library to determine whether it has the ABS statistics you require, or visit our web site for a list of libraries.
- CPI INFOLINE* For current and historical Consumer Price Index data, call 1902 981 074 (call cost 77c per minute).
- DIAL-A-STATISTIC* For the latest figures for National Accounts, Balance of Payments, Labour Force, Average Weekly Earnings, Estimated Resident Population and the Consumer Price Index call 1900 986 400 (call cost 77c per minute).

INFORMATION SERVICE

Data which have been published and can be provided within five minutes are free of charge. Our information consultants can also help you to access the full range of ABS information—ABS user-pays services can be tailored to your needs, time frame and budget. Publications may be purchased. Specialists are on hand to help you with analytical or methodological advice.

- PHONE* **1300 135 070**
- EMAIL* **client.services@abs.gov.au**
- FAX* 1300 135 211
- POST* Client Services, ABS, GPO Box 796, Sydney 2001

WHY NOT SUBSCRIBE?

ABS subscription services provide regular, convenient and prompt deliveries of ABS publications and products as they are released. Email delivery of monthly and quarterly publications is available.

- PHONE* 1300 366 323
- EMAIL* subscriptions@abs.gov.au
- FAX* 03 9615 7848
- POST* Subscription Services, ABS, GPO Box 2796Y, Melbourne 3001



2620200001034
ISSN 1031-038X

RRP \$22.00